



# First Fix Catalogue

A collage of various metal fasteners and hardware components, including bolts, nuts, washers, and brackets, arranged on a blue background with a white diagonal line. The components are shown in different orientations and sizes, highlighting the variety of products offered. The word "Catalogue" is partially visible in the bottom left corner.

# Contents

Cable Trunking	3 - 12	
Lighting Trunking	13 - 15	
Cable Tray	16 - 23	
Channel & Support Systems	24 - 28	
Galvanised Conduit / Accessories & Conlok Accessories	29	
Plastic Conduit & Accessories	30 - 31	
DB Surrounds	32	
Cable Ladder & Accessories	33 - 35	
Cable Basket & Accessories	36 - 37	
Floor Trunking Systems	38 - 46	
Roof Support Systems	47 - 48	
Consumables	49 - 51	
Spring Steel Clips	52 - 54	



**Aitkens** is an independent company, family owned and run. We are a major importer of first fix products and proud cable management manufacturer based in Glasgow, Scotland.

The company was established in 1977 and has built up an enviable reputation supplying the 'first-fix' market throughout the UK through our wholesaler / distribution partners & stockists, backed up with a growing branch network of distribution hubs currently in Leeds & Manchester. With our experienced and flexible sales force, we have never been better placed to service the electrical industry. Our head office is in Rutherglen, Glasgow with a 65,000 sq. ft building incorporating a trade counter along with a vast manufacturing plant and distribution centre.

**We take pride in 2026 being our 49th year in business and it is testament to our loyal staff members, our customers, and suppliers that we have reached this milestone.**

Central to our success is our continual re-investment both in up-to-date machinery in the manufacturing/pre-fab workshop which allows us to keep the manufacturing costs as low as possible in the current highly competitive and demanding marketplace. Further investment in vehicles, stock and information technology help us to maintain our growing business and meet our future aspirations. Strong relationships with our suppliers and customers allow us to mould our stock profile to meet the needs of the ever-changing electrical industry.



# Surface Cable Trunking Systems

## General Introduction

The Aitkens Surface Cable Trunking Systems are a comprehensive package of products completely manufactured at our premises in Scotland. The systems designs benefit from being manufactured on the most flexible combined production equipment available, including technology currently new to the market place, all supported by the well established Aitkens sales organisation and company reputation.

Generally Aitkens Trunking Systems comprise three specific product groups, being System A (single compartment sections) System B (two compartment sections) and System C (three compartment sections), each complemented with a full selection of fittings and accessories to provide the client with a product to suit all installation requirements. All components are provided with the appropriate fixings required to complete the coupling of each fitting or accessory.



## General Specification - IP4X as standard

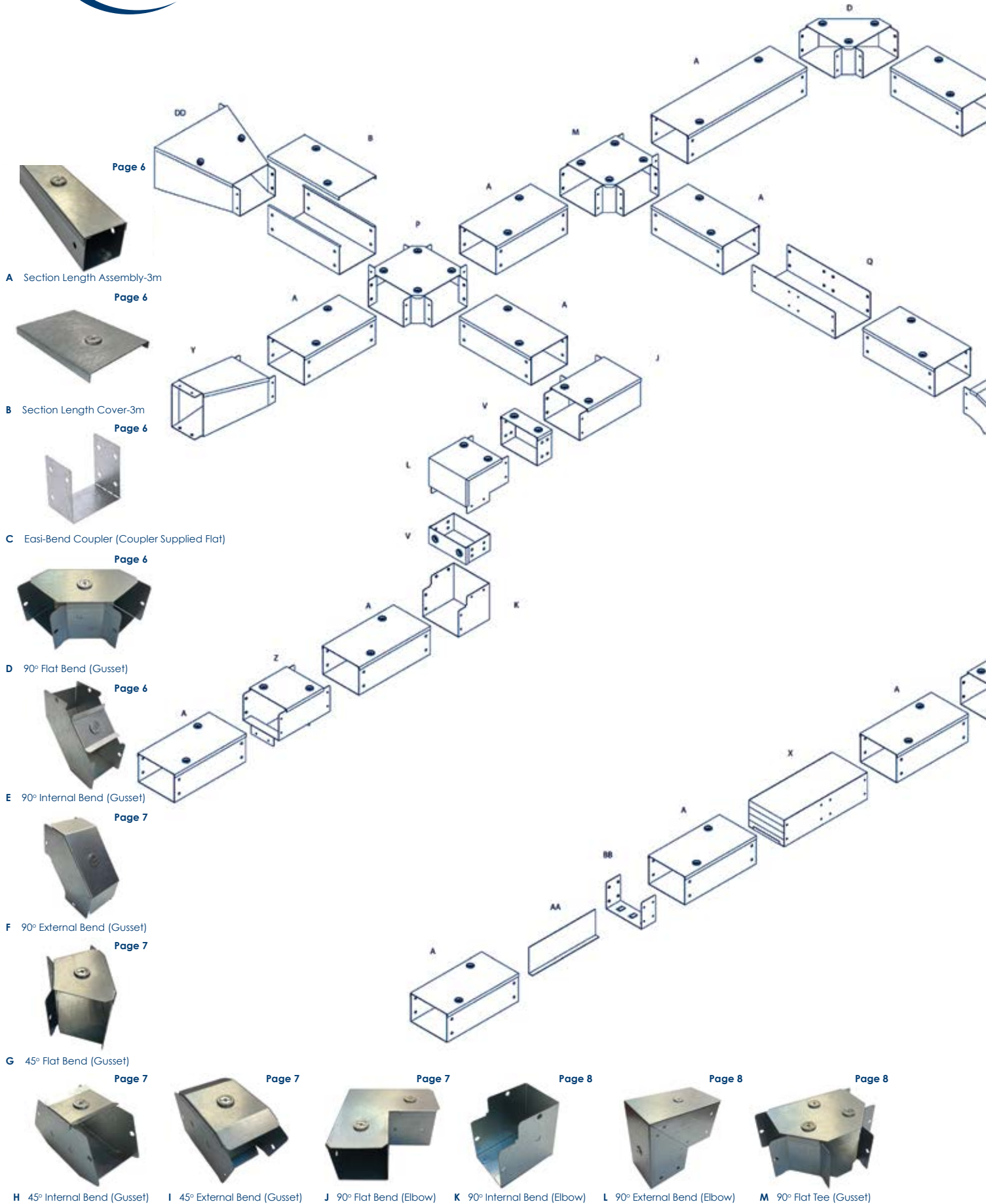
All systems are produced in accordance with appropriate standards and specifications, and are subject to stringent internal production control procedures to ensure product reliability and quality is maintained in all instances.

Sections are designed and manufactured to generally comply with the requirements of BS EN 50085:2005+A1:2013 and BS EN 50085-2-1:2006 cable and trunking systems and cable ducting system for electrical installations. Part 1, and when provided in a multi-compartment format are produced as equal compartment with all fittings and accessories provided with partitions and or flyover channels to maintain full segregation throughout the system. Please note non-standard sections and unequal compartment sizes are available on request. Part 2, cable trunking systems and cable ducting systems intended for mounting on walls and ceiling.

Materials and finishes widely available are mild steel pre galvanised as standard and can be powder coated to order (RAL No. required). Mild steel pre galvanised, manufactured from steel complying with BS EN 10346.

A BSI test report for IP4X trunking systems is available on request.

Security trunking and accessories are also available.  
Please see our downloads section on our website for more information.









Straight Length Assembly – 3m						
Nominal section size (mm)						
50 x 50	75 x 50	75 x 75	100 x 50	100 x 75	100 x 100	150 x 50
<b>A0505Q</b>	<b>A0705Q</b>	<b>A0707Q</b>	<b>A1005Q</b>	<b>A1007Q</b>	<b>A1010Q</b>	<b>A1505Q</b>
150 x 75	150 x 100	150 x 150	200 x 100	225 x 50	225 x 150	300 x 150
<b>A1507Q</b>	<b>A1510Q</b>	<b>A1515Q</b>	<b>A2010Q</b>	<b>A2205Q</b>	<b>A2215Q</b>	<b>A3015Q</b>



Spare Cover Length – 3m						
Nominal section size (mm)						
50 x 50	75 x 50	75 x 75	100 x 50	100 x 75	100 x 100	150 x 50
<b>A0500LS</b>	<b>A0700LS</b>	<b>A0700LS</b>	<b>A1000LS</b>	<b>A1000LS</b>	<b>A1000LS</b>	<b>A1500LS</b>
150 x 75	150 x 100	150 x 150	200 x 100	225 x 50	225 x 150	300 x 150
<b>A1500LS</b>	<b>A1500LS</b>	<b>A1500LS</b>	<b>A2000LS</b>	<b>A2200LS</b>	<b>A2200LS</b>	<b>A3000LS</b>



Standard Easi-Bend Coupler (Coupler Supplied Flat)						
Nominal section size (mm)						
50 x 50	75 x 50	75 x 75	100 x 50	100 x 75	100 x 100	150 x 50
<b>A0505CS</b>	<b>A0705CS</b>	<b>A0707CS</b>	<b>A1005CS</b>	<b>A1007CS</b>	<b>A1010CS</b>	<b>A1505CS</b>
150 x 75	150 x 100	150 x 150	200 x 100	225 x 50	225 x 150	300 x 150
<b>A1507CS</b>	<b>A1510CS</b>	<b>A1515CS</b>	<b>A2010CS</b>	<b>A2205CS</b>	<b>A2215CS</b>	<b>A3015CS</b>



90° Flat Bend Assembly – Gusset type						
Nominal section size (mm)						
50 x 50	75 x 50	75 x 75	100 x 50	100 x 75	100 x 100	150 x 50
<b>A0505FB</b>	<b>A0705FB</b>	<b>A0707FB</b>	<b>A1005FB</b>	<b>A1007FB</b>	<b>A1010FB</b>	<b>A1505FB</b>
150 x 75	150 x 100	150 x 150	200 x 100	225 x 50	225 x 150	300 x 150
<b>A1507FB</b>	<b>A1510FB</b>	<b>A1515FB</b>	<b>A2010FB</b>	<b>A2205FB</b>	<b>A2215FB</b>	<b>A3015FB</b>



90° Internal Bend Assembly – Gusset type						
Nominal section size (mm)						
50 x 50	75 x 50	75 x 75	100 x 50	100 x 75	100 x 100	150 x 50
<b>A0505IB</b>	<b>A0705IB</b>	<b>A0707IB</b>	<b>A1005IB</b>	<b>A1007IB</b>	<b>A1010IB</b>	<b>A1505IB</b>
150 x 75	150 x 100	150 x 150	200 x 100	225 x 50	225 x 150	300 x 150
<b>A1507IB</b>	<b>A1510IB</b>	<b>A1515IB</b>	<b>A2010IB</b>	<b>A2205IB</b>	<b>A2215IB</b>	<b>A3015IB</b>





90° External Bend Assembly – Gusset type						
Nominal section size (mm)						
50 x 50	75 x 50	75 x 75	100 x 50	100 x 75	100 x 100	150 x 50
<b>A0505EB</b>	<b>A0705EB</b>	<b>A0707EB</b>	<b>A1005EB</b>	<b>A1007EB</b>	<b>A1010EB</b>	<b>A1505EB</b>
150 x 75	150 x 100	150 x 150	200 x 100	225 x 50	225 x 150	300 x 150
<b>A1507EB</b>	<b>A1510EB</b>	<b>A1515EB</b>	<b>A2010EB</b>	<b>A2205EB</b>	<b>A2215EB</b>	<b>A3015EB</b>



45° Flat Bend Assembly – Gusset type						
Nominal section size (mm)						
50 x 50	75 x 50	75 x 75	100 x 50	100 x 75	100 x 100	150 x 50
<b>A0505HB</b>	<b>A0705HB</b>	<b>A0707HB</b>	<b>A1005HB</b>	<b>A1007HB</b>	<b>A1010HB</b>	<b>A1505HB</b>
150 x 75	150 x 100	150 x 150	200 x 100	225 x 50	225 x 150	300 x 150
<b>A1507HB</b>	<b>A1510HB</b>	<b>A1515HB</b>	<b>A2010HB</b>	<b>A2205HB</b>	<b>A2215HB</b>	<b>A3015HB</b>



45° Internal Bend Assembly – Gusset type						
Nominal section size (mm)						
50 x 50	75 x 50	75 x 75	100 x 50	100 x 75	100 x 100	150 x 50
<b>A0505HI</b>	<b>A0705HI</b>	<b>A0707HI</b>	<b>A1005HI</b>	<b>A1007HI</b>	<b>A1010HI</b>	<b>A1505HI</b>
150 x 75	150 x 100	150 x 150	200 x 100	225 x 50	225 x 150	300 x 150
<b>A1507HI</b>	<b>A1510HI</b>	<b>A1515HI</b>	<b>A2010HI</b>	<b>A2205HI</b>	<b>A2215HI</b>	<b>A3015HI</b>



45° External Bend Assembly – Gusset type						
Nominal section size (mm)						
50 x 50	75 x 50	75 x 75	100 x 50	100 x 75	100 x 100	150 x 50
<b>A0505HE</b>	<b>A0705HE</b>	<b>A0707HE</b>	<b>A1005HE</b>	<b>A1007HE</b>	<b>A1010HE</b>	<b>A1505HE</b>
150 x 75	150 x 100	150 x 150	200 x 100	225 x 50	225 x 150	300 x 150
<b>A1507HE</b>	<b>A1510HE</b>	<b>A1515HE</b>	<b>A2010HE</b>	<b>A2205HE</b>	<b>A2215HE</b>	<b>A3015HE</b>



90° Flat Bend Assembly – Elbow type						
Nominal section size (mm)						
50 x 50	75 x 50	75 x 75	100 x 50	100 x 75	100 x 100	150 x 50
<b>A0505EF</b>	<b>A0705EF</b>	<b>A0707EF</b>	<b>A1005EF</b>	<b>A1007EF</b>	<b>A1010EF</b>	<b>A1505EF</b>
150 x 75	150 x 100	150 x 150	200 x 100	225 x 50	225 x 150	300 x 150
<b>A1507EF</b>	<b>A1510EF</b>	<b>A1515EF</b>	<b>A2010EF</b>	<b>A2205EF</b>	<b>A2215EF</b>	<b>A3015EF</b>



### 90° Internal Bend Assembly – Elbow type

Nominal section size (mm)

50 x 50	75 x 50	75 x 75	100 x 50	100 x 75	100 x 100	150 x 50
<b>A0505EI</b>	<b>A0705EI</b>	<b>A0707EI</b>	<b>A1005EI</b>	<b>A1007EI</b>	<b>A1010EI</b>	<b>A1505EI</b>
150 x 75	150 x 100	150 x 150	200 x 100	225 x 50	225 x 150	300 x 150
<b>A1507EI</b>	<b>A1510EI</b>	<b>A1515EI</b>	<b>A2010EI</b>	<b>A2205EI</b>	<b>A2215EI</b>	<b>A3015EI</b>



### 90° External Bend Assembly – Elbow type

Nominal section size (mm)

50 x 50	75 x 50	75 x 75	100 x 50	100 x 75	100 x 100	150 x 50
<b>A0505EE</b>	<b>A0705EE</b>	<b>A0707EE</b>	<b>A1005EE</b>	<b>A1007EE</b>	<b>A1010EE</b>	<b>A1505EE</b>
150 x 75	150 x 100	150 x 150	200 x 100	225 x 50	225 x 150	300 x 150
<b>A1507EE</b>	<b>A1510EE</b>	<b>A1515EE</b>	<b>A2010EE</b>	<b>A2205EE</b>	<b>A2215EE</b>	<b>A3015EE</b>



### 90° Flat Tee Assembly – Gusset type

Nominal section size (mm)

50 x 50	75 x 50	75 x 75	100 x 50	100 x 75	100 x 100	150 x 50
<b>A0505FT</b>	<b>A0705FT</b>	<b>A0707FT</b>	<b>A1005FT</b>	<b>A1007FT</b>	<b>A1010FT</b>	<b>A1505FT</b>
150 x 75	150 x 100	150 x 150	200 x 100	225 x 50	225 x 150	300 x 150
<b>A1507FT</b>	<b>A1510FT</b>	<b>A1515FT</b>	<b>A2010FT</b>	<b>A2205FT</b>	<b>A2215FT</b>	<b>A3015FT</b>



### 90° Internal Tee Assembly – Gusset type

Nominal section size (mm)

50 x 50	75 x 50	75 x 75	100 x 50	100 x 75	100 x 100	150 x 50
<b>A0505IT</b>	<b>A0705IT</b>	<b>A0707IT</b>	<b>A1005IT</b>	<b>A1007IT</b>	<b>A1010IT</b>	<b>A1505IT</b>
150 x 75	150 x 100	150 x 150	200 x 100	225 x 50	225 x 150	300 x 150
<b>A1507IT</b>	<b>A1510IT</b>	<b>A1515IT</b>	<b>A2010IT</b>	<b>A2205IT</b>	<b>A2215IT</b>	<b>A3015IT</b>



### 90° External Tee Assembly – Gusset type

Nominal section size (mm)

50 x 50	75 x 50	75 x 75	100 x 50	100 x 75	100 x 100	150 x 50
<b>A0505ET</b>	<b>A0705ET</b>	<b>A0707ET</b>	<b>A1005ET</b>	<b>A1007ET</b>	<b>A1010ET</b>	<b>A1505ET</b>
150 x 75	150 x 100	150 x 150	200 x 100	225 x 50	225 x 150	300 x 150
<b>A1507ET</b>	<b>A1510ET</b>	<b>A1515ET</b>	<b>A2010ET</b>	<b>A2205ET</b>	<b>A2215ET</b>	<b>A3015ET</b>





### 90° Four-way Intersection Assembly – Gusset type

Nominal section size (mm)						
50 x 50	75 x 50	75 x 75	100 x 50	100 x 75	100 x 100	150 x 50
<b>A0505FW</b>	<b>A0705FW</b>	<b>A0707FW</b>	<b>A1005FW</b>	<b>A1007FW</b>	<b>A1010FW</b>	<b>A1505FW</b>
150 x 75	150 x 100	150 x 150	200 x 100	225 x 50	225 x 150	300 x 150
<b>A1507FW</b>	<b>A1510FW</b>	<b>A1515FW</b>	<b>A2010FW</b>	<b>A2205FW</b>	<b>A2215FW</b>	<b>A3015FW</b>



### Extended Coupler (350mm)

Nominal section size (mm)						
50 x 50	75 x 50	75 x 75	100 x 50	100 x 75	100 x 100	150 x 50
<b>A0505CE</b>	<b>A0705CE</b>	<b>A0707CE</b>	<b>A1005CE</b>	<b>A1007CE</b>	<b>A1010CE</b>	<b>A1505CE</b>
150 x 75	150 x 100	150 x 150	200 x 100	225 x 50	225 x 150	300 x 150
<b>A1507CE</b>	<b>A1510CE</b>	<b>A1515CE</b>	<b>A2010CE</b>	<b>A2205CE</b>	<b>A2215CE</b>	<b>A3015CE</b>



### Blank End

Nominal section size (mm)						
50 x 50	75 x 50	75 x 75	100 x 50	100 x 75	100 x 100	150 x 50
<b>A0505EC</b>	<b>A0705EC</b>	<b>A0707EC</b>	<b>A1005EC</b>	<b>A1007EC</b>	<b>A1010EC</b>	<b>A1505EC</b>
150 x 75	150 x 100	150 x 150	200 x 100	225 x 50	225 x 150	300 x 150
<b>A1507EC</b>	<b>A1510EC</b>	<b>A1515EC</b>	<b>A2010EC</b>	<b>A2205EC</b>	<b>A2215EC</b>	<b>A3015EC</b>



### Flange Set (pair)

Nominal section size (mm)						
50 x 50	75 x 50	75 x 75	100 x 50	100 x 75	100 x 100	150 x 50
<b>A0005TS</b>	<b>A0005TS</b>	<b>A0007TS</b>	<b>A0005TS</b>	<b>A0007TS</b>	<b>A0010TS</b>	<b>A0005TS</b>
150 x 75	150 x 100	150 x 150	200 x 100	225 x 50	225 x 150	300 x 150
<b>A0007TS</b>	<b>A0010TS</b>	<b>A0015TS</b>	<b>A0010TS</b>	<b>A0005TS</b>	<b>A0015TS</b>	<b>A0015TS</b>



### Termination Unit – 3 Sided type

Nominal section size (mm)						
50 x 50	75 x 50	75 x 75	100 x 50	100 x 75	100 x 100	150 x 50
<b>A0505TF</b>	<b>A0705TF</b>	<b>A0707TF</b>	<b>A1005TF</b>	<b>A1007TF</b>	<b>A1010TF</b>	<b>A1505TF</b>
150 x 75	150 x 100	150 x 150	200 x 100	225 x 50	225 x 150	300 x 150
<b>A1507TF</b>	<b>A1510TF</b>	<b>A1515TF</b>	<b>A2010TF</b>	<b>A2205TF</b>	<b>A2215TF</b>	<b>A3015TF</b>



### Fitting Coupler Assembly

Nominal section size (mm)

50 x 50	75 x 50	75 x 75	100 x 50	100 x 75	100 x 100	150 x 50
<b>A0505FC</b>	<b>A0705FC</b>	<b>A0707FC</b>	<b>A1005FC</b>	<b>A1007FC</b>	<b>A1010FC</b>	<b>A1505FC</b>
150 x 75	150 x 100	150 x 150	200 x 100	225 x 50	225 x 150	300 x 150
<b>A1507FC</b>	<b>A1510FC</b>	<b>A1515FC</b>	<b>A2010FC</b>	<b>A2205FC</b>	<b>A2215FC</b>	<b>A3015FC</b>



### Section Hanger Assembly

Nominal section size (mm)

50 x 50	75 x 50	75 x 75	100 x 50	100 x 75	100 x 100	150 x 50
<b>A0500SH</b>	<b>A0700SH</b>	<b>A0700SH</b>	<b>A1000SH</b>	<b>A1000SH</b>	<b>A1000SH</b>	<b>A1500SH</b>
150 x 75	150 x 100	150 x 150	200 x 100	225 x 50	225 x 150	300 x 150
<b>A1500SH</b>	<b>A1500SH</b>	<b>A1500SH</b>	<b>A2000SH</b>	<b>A2200SH</b>	<b>A2200SH</b>	<b>A3000SH</b>



### Cable Separator

Nominal section size (mm)

50 x 50	75 x 50	75 x 75	100 x 50	100 x 75	100 x 100	150 x 50
<b>A0505SC</b>	<b>A0705SC</b>	<b>A0707SC</b>	<b>A1005SC</b>	<b>A1007SC</b>	<b>A1010SC</b>	<b>A1505SC</b>
150 x 75	150 x 100	150 x 150	200 x 100	225 x 50	225 x 150	300 x 150
<b>A1507SC</b>	<b>A1510SC</b>	<b>A1515SC</b>	<b>A2010SC</b>	<b>A2205SC</b>	<b>A2215SC</b>	<b>A3015SC</b>



### Pin Rack

Nominal section size (mm)

50 x 50	75 x 50	75 x 75	100 x 50	100 x 75	100 x 100	150 x 50
<b>A0505PR</b>	<b>A0705PR</b>	<b>A0707PR</b>	<b>A1005PR</b>	<b>A1007PR</b>	<b>A1010PR</b>	<b>A1505PR</b>
150 x 75	150 x 100	150 x 150	200 x 100	225 x 50	225 x 150	300 x 150
<b>A1507PR</b>	<b>A1510PR</b>	<b>A1515PR</b>	<b>A2010PR</b>	<b>A2205PR</b>	<b>A2215PR</b>	<b>A3015PR</b>

### Distribution Board Tops



Part ref.  
**AT2BSTABB**  
**AT2BSTSCH**  
**AT2BSTHAG**

To Suit  
**ABB**  
**Schneider**  
**Hager**

### Distribution Board Bottoms



Part ref.  
**AT2BSBABBB**  
**AT2BSBSCH**  
**AT2BSBHAG**

To Suit  
**ABB**  
**Schneider**  
**Hager**

### Distribution Board Example Wrap







90° Sharp Tee						
Nominal section size (mm)						
50 x 50	75 x 50	75 x 75	100 x 50	100 x 75	100 x 100	150 x 50
<b>A0505ST</b>	<b>A0705ST</b>	<b>A0707ST</b>	<b>A1005ST</b>	<b>A1007ST</b>	<b>A1010ST</b>	<b>A1505ST</b>
150 x 75	150 x 100	150 x 150	200 x 100	225 x 50	225 x 150	300 x 150
<b>A1507ST</b>	<b>A1510ST</b>	<b>A1515ST</b>	<b>A2010ST</b>	<b>A2205ST</b>	<b>A2215ST</b>	<b>A3015ST</b>



Partition Length – 3m						
Nominal section size (mm)						
50 x 50	75 x 50	75 x 75	100 x 50	100 x 75	100 x 100	150 x 50
<b>A0005PT</b>	<b>A0005PT</b>	<b>A0007PT</b>	<b>A0005PT</b>	<b>A0007PT</b>	<b>A0010PT</b>	<b>A0005PT</b>
150 x 75	150 x 100	150 x 150	200 x 100	225 x 50	225 x 150	300 x 150
<b>A0007PT</b>	<b>A0010PT</b>	<b>A0015PT</b>	<b>A0010PT</b>	<b>A0005PT</b>	<b>A0015PT</b>	<b>A0015PT</b>



Partition Coupler – Dual 2 & 3 compartment (equal)						
Nominal section size (mm)						
	75 x 50	75 x 75	100 x 50	100 x 75	100 x 100	150 x 50
	<b>A0705CP</b>	<b>A0707CP</b>	<b>A1005CP</b>	<b>A1007CP</b>	<b>A1010CP</b>	<b>A1505CP</b>
150 x 75	150 x 100		200 x 100	225 x 50		
<b>A1507CP</b>	<b>A1510CP</b>		<b>A2010CP</b>	<b>A2205CP</b>		



Metal Cable Retainers						
Nominal section size (mm)						
50 x 50	75 x 50	75 x 75	100 x 50	100 x 75	100 x 100	
<b>A0500CR</b>	<b>A0700CR</b>			<b>A1000CR</b>		
150 x 50	150 x 75	150 x 100	150 x 150	200 x 100	225 x 50	225 x 150
	<b>A1500CR</b>			<b>A2000CR</b>	<b>A2200CR</b>	



IP4x Trunking Lid Joint Masks						
Nominal section size (mm)						
50 x 50	75 x 50	75 x 75	100 x 50	100 x 75	100 x 100	150 x 50
<b>AX0500JM</b>	<b>AX0700JM</b>		<b>AX1000JM</b>	<b>AX1500JM</b>		
150 x 75	150 x 100	150 x 150	200 x 100	225 x 50	225 x 150	300 x 150
	<b>AX1500JM</b>		<b>AX2000JM</b>	<b>AX2200JM</b>	<b>AX3000JM</b>	



Metal Turn Button / Bar Assemblies							
Nominal section size (mm)							
50 x 50	75 x 50	75 x 75	100 x 50	100 x 75	100 x 100		
<b>AMB/AM2B</b>	<b>AMB/AM3B</b>			<b>AMB/AM4B</b>			
150 x 50	150 x 75	150 x 100	150 x 150	200 x 100	225 x 50	225 x 150	300 x 150
	<b>AMB/AM6B</b>				<b>AMB/AM2B</b>		

Earth Continuity Strap (ea)

**AES**



M6 Fixing Screws (ea)

**ATS**



PVC Edging Strip (m)

**APE**



**Straight Reducer Assembly – Graduated Type**

Minor Entry Size (mm)	Major Entry Size (mm)					
	75 x 50	75 x 75	100 x 50	100 x 75	100 x 100	150 x 50
50 x 50	A0705-0505GR	A0707-0505GR	A1005-0505GR	A1007-0505GR	A1010-0505GR	A1505-0505GR
75 x 50		A0707-0705GR	A1005-0705GR	A1007-0705GR	A1010-0705GR	A1505-0705GR
75 x 75			A1005-0707GR	A1007-0707GR	A1010-0707GR	A1505-0707GR
100 x 50				A1007-1005GR	A1010-1005GR	A1505-1005GR
100 x 75					A1010-1007GR	A1505-1007GR
100 x 100						A1505-1010GR



Minor Entry Size (mm)	Major Entry Size (mm)						
	150 x 75	150 x 100	150 x 150	200 x 100	225 x 50	225 x 150	300 x 150
50 x 50	A1507-0505GR	A1510-0505GR	A1515-0505GR	A2010-0505GR	A2205-0505GR	A2215-0505GR	A3015-0505GR
75 x 50	A1507-0705GR	A1510-0705GR	A1515-0705GR	A2010-0705GR	A2205-0705GR	A2215-0705GR	A3015-0705GR
75 x 75	A1507-0707GR	A1510-0707GR	A1515-0707GR	A2010-0707GR	A2205-0707GR	A2215-0707GR	A3015-0707GR
100 x 50	A1507-1005GR	A1510-1005GR	A1515-1005GR	A2010-1005GR	A2205-1005GR	A2215-1005GR	A3015-1005GR
100 x 75	A1507-1007GR	A1510-1007GR	A1515-1007GR	A2010-1007GR	A2205-1007GR	A2215-1007GR	A3015-1007GR
100 x 100	A1507-1010GR	A1510-1010GR	A1515-1010GR	A2010-1010GR	A2205-1010GR	A2215-1010GR	A3015-1010GR
150 x 50	A1507-1505GR	A1510-1505GR	A1515-1505GR	A2010-1505GR	A2205-1505GR	A2215-1505GR	A3015-1505GR
150 x 75		A1510-1507GR	A1515-1507GR	A2010-1507GR	A2205-1507GR	A2215-1507GR	A3015-1507GR
150 x 100			A1515-1510GR	A2010-1510GR	A2205-1510GR	A2215-1510GR	A3015-1510GR
150 x 150				A2010-1515GR	A2205-1515GR	A2215-1515GR	A3015-1515GR
200 x 100					A2205-2010GR	A2215-2010GR	A3015-2010GR
225 x 50						A2215-2205GR	A3015-2205GR
225 x 150							A3015-2215GR



# Lighting Trunking System

## General Introduction

Aitkens System 55, Lighting Trunking, has been developed to accommodate the latest market requirements, whilst providing a high quality, easily installed and reliable product. System 55 is provided in a nominal 50mm square format, with a 4m body length to minimise installation time and cost, and to ensure performance characteristics are maintained.

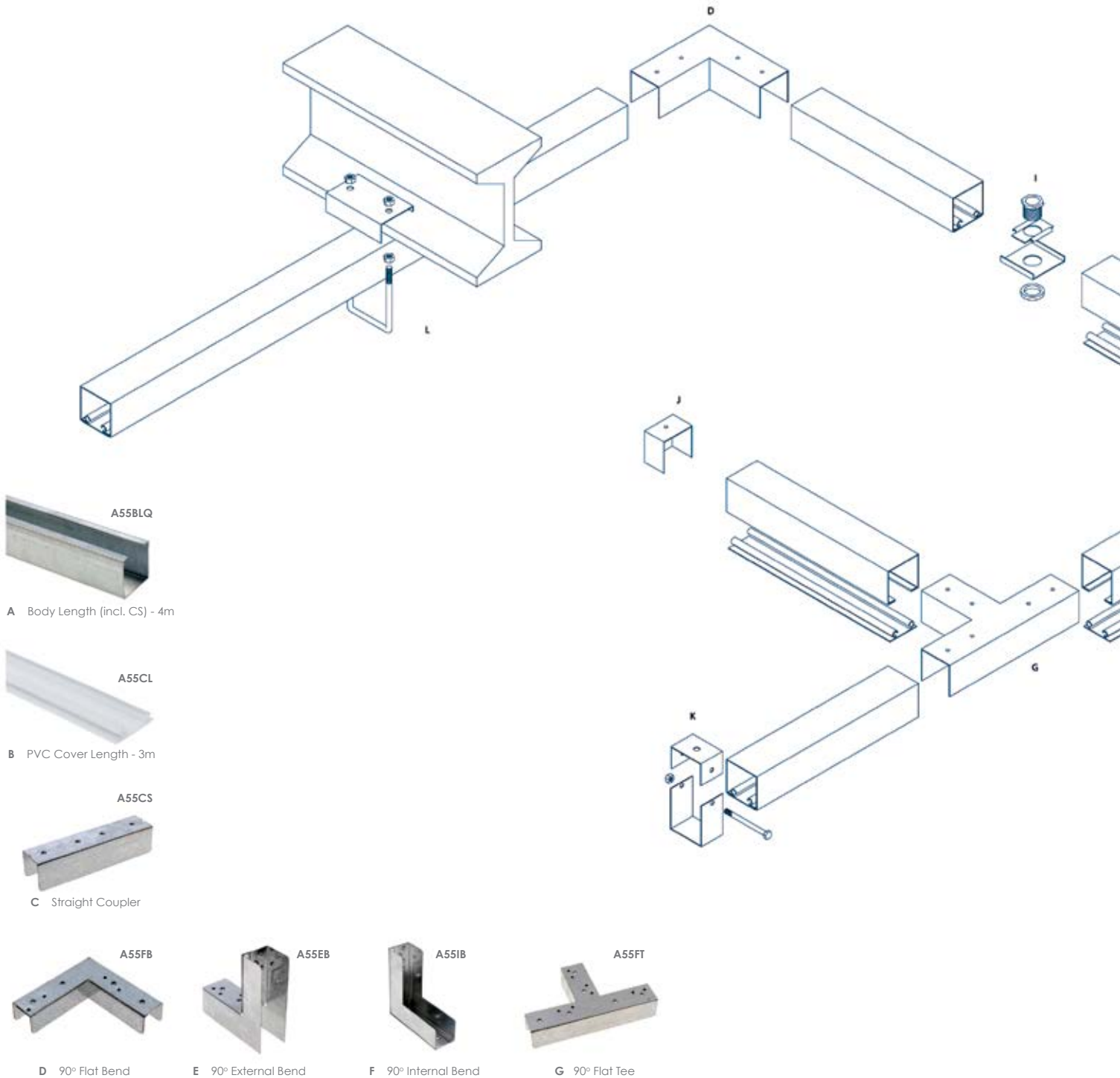
System 55 is offered with a comprehensive range of fittings and accessories, each supplied with the appropriate number of fixing screws, adopting the conventional slide assembly pressure screw coupling format, to eliminate the need for site drilling at junction points. All fittings are provided with pre-tapped fixings, rolled thread type, both to ensure that sharp edges are minimised and that a reliable thread is ensured.

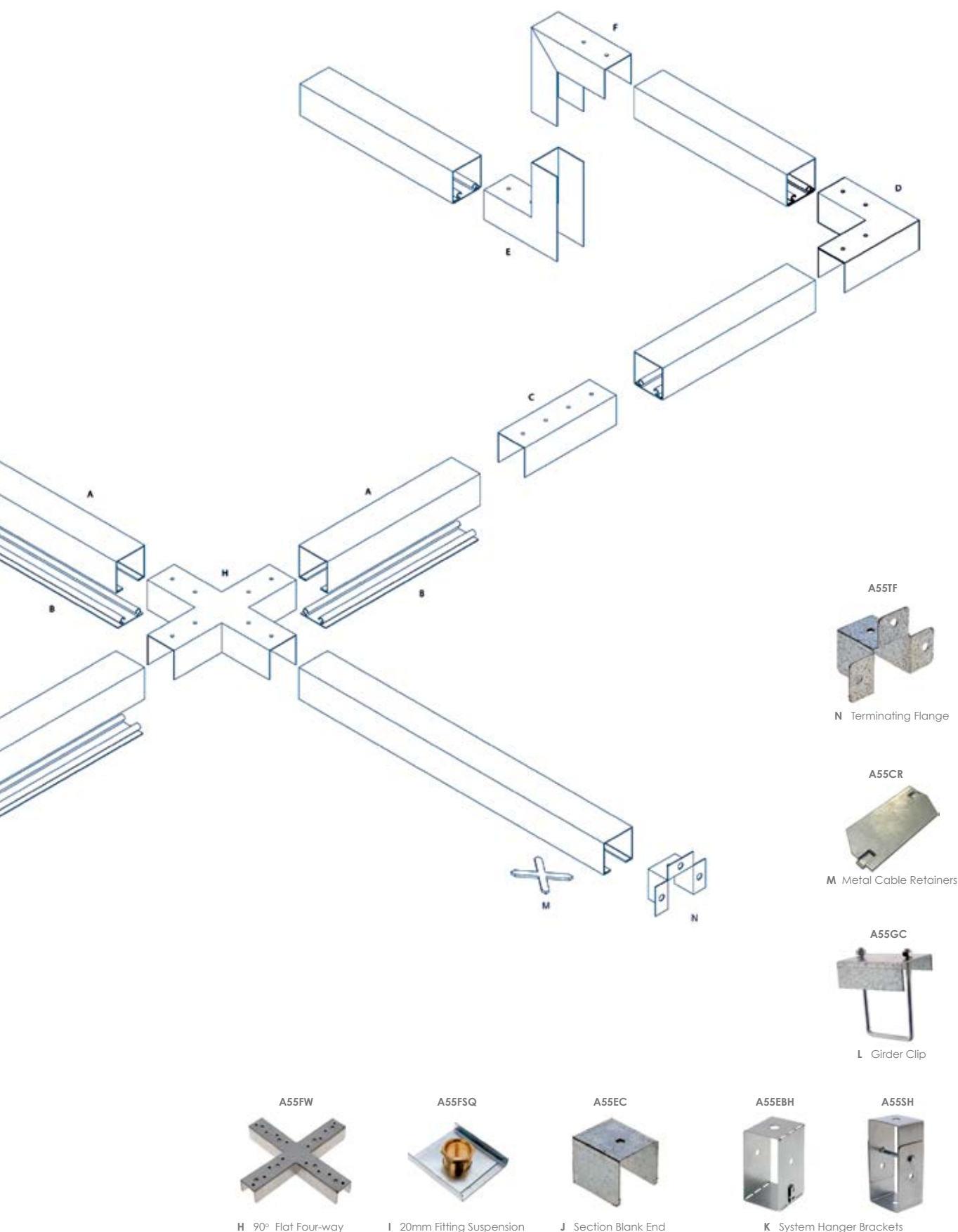
## General Specification

The System 55 body length is produced as a roll-formed section from pre-coated galvanised steel which is procured to comply with the requirements of BS EN 10327 : 2004, with a zinc coating weight of 275 g/m<sup>2</sup> (Z275), providing a nominal coating thickness of 15µm (microns) or 0.015mm.

The roll-formed section also features a combined safe edge and reinforcing return flange which helps achieve high linear rigidity, throughout the system.









# Cable Tray Systems

## General Introduction

The Aitkens Cable Tray Systems are a comprehensive package of products completely manufactured at our premises in Scotland. The systems designs benefit from being produced on a flexible combined CAD / CAM / CNC manufacturing cells, all supported by the well established Aitken sales organisation and company reputation.

Generally Aitkens Cable Tray Systems comprise three specific product groups, being System L (Light Duty Tray sections) System M (Medium Duty Return Flange Tray sections) and System H (Heavy Duty Return Flange Tray sections), each complemented with a full selection of fittings and accessories to provide the client with a product to suit all installation requirements.

Systems lengths are produced as standard in a 3 metre format, manufactured from sheet steel into a channel section, to provide cable management in all commercial and industrial installation environments. Tray beds are perforated at a minimum of 12%.

Systems fittings are designed to be fully compatible with products lengths, adopting a 'one piece' design concept where practical and incorporating integral couplers to minimise installation time.



## General Specification

All systems are produced in accordance with appropriate standards and specifications, and are subject to stringent internal production control procedures to ensure product reliability and quality is maintained in all instances.

The systems are produced as standard from pre-coated galvanised steel which is procured to comply with the requirements of BS EN 10327 : 2004, with a zinc coating weight of 275g/m<sup>2</sup> (Z275), providing a nominal coating thickness of 15µm (microns) or 0.015mm.

The recommended (BSC) general product life expectancy is 2 - 5 years (external - coastal / industrial and urban), 5 - 10 years (external - suburban and rural) and 20 - 50 years (internal - dry and unpolluted). For wet and polluted environments alternative non standard solutions are available on request.

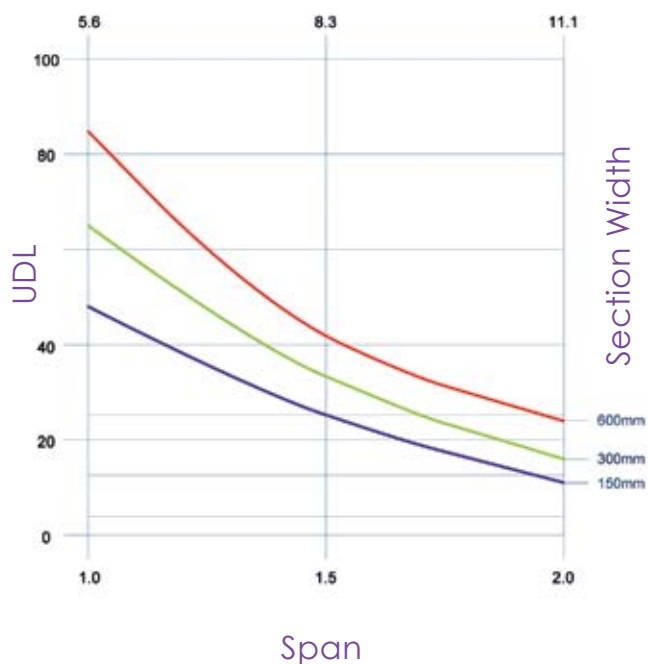
\* Our Cable Tray Systems are now available in ZM replacing our Hot Dipped Galv (HDG) offering. See our download page on our website for our ZM Datasheet.

## Alternative materials and finishes (non-standard available to order)

Substrate material	Finish
• Pre-Coated Galvanised Steel	G275
• Zinc, Magnesium & Aluminium*	ZM310
• Pre-Galvanised Steel	Epoxy powder coated or Stove enamelled
• Pre-Galvanised Steel	Nylon coated or Polyester powder coated
• Stainless Steel grade 316 (marine)	Mill finish (2B)
• Stainless Steel grade 304	Mill finish (2B)

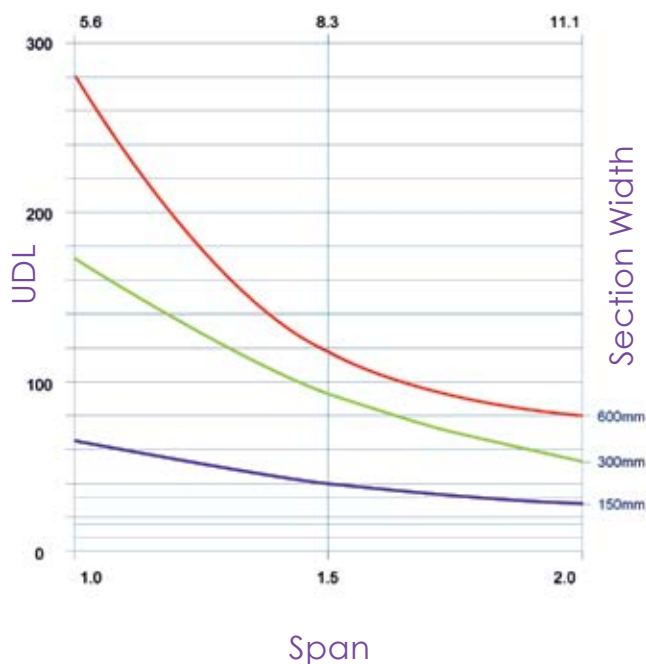
### Light Duty Tray System

#### Central Deflection



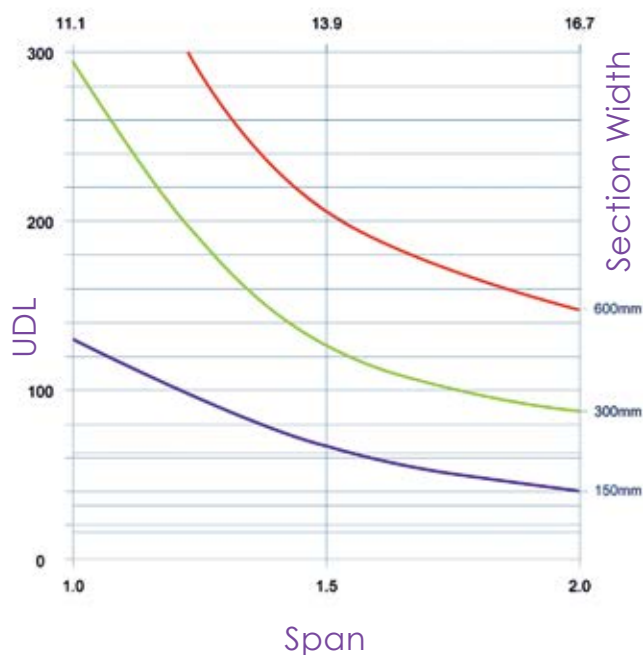
### Medium Duty Tray System

#### Central Deflection



### Heavy Duty Tray System

#### Central Deflection



The performance characteristics given, are offered as a nominal indication of the safe working loads that can be expected for each product type, being based on a simulated continuous run condition.

#### Definitions and Units

- Uniformly Distributed Load (kg/m) – The load applied uniformly to each span, given a continuous multispan condition.
- Span (m) – Linear distance between section supports.
- Central Deflection (mm) – The maximum vertical (assumed at 1/180th of the span) deflection mid span central of the tray bed.
- Section Capacity (kg/m) – The calculated maximum load requirement for a nominally 75% full cable situation, based on a net cable weight factor of 0.0021g/mm<sup>3</sup>. Indicated on the graphs as dashed lines.

The load characteristics shown are provided only as a guide, in good faith, without accepting any liability in contract, in the event of the installation performance varying from that shown.



Light Duty System – Straight Length – 3m				
Section width				
50mm	75mm	100mm	150mm	225mm
<b>LDT2</b>	<b>LDT3</b>	<b>LDT4</b>	<b>LDT6</b>	<b>LDT9</b>
Section width				
300mm	450mm	600mm	750mm	900mm
<b>LDT12</b>	<b>LDT18</b>	<b>LDT24</b>	<b>LDT30</b>	<b>LDT36</b>



Light Duty System – Straight Coupler – (pair)				
Section width				
50mm	75mm	100mm	150mm	225mm
<b>LDSC</b>				
Section width				
300mm	450mm	600mm	750mm	900mm
<b>LDSC</b>				

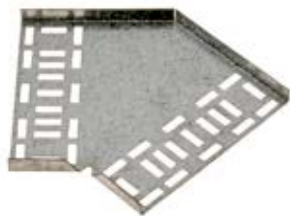


Light Duty System – 90° Flat Bend				
Section width				
50mm	75mm	100mm	150mm	225mm
<b>LDFB2</b>	<b>LDFB3</b>	<b>LDFB4</b>	<b>LDFB6</b>	<b>LDFB9</b>
Section width				
300mm	450mm	600mm	750mm	900mm
<b>LDFB12</b>	<b>LDFB18</b>	<b>LDFB24</b>	<b>LDFB30</b>	<b>LDFB36</b>



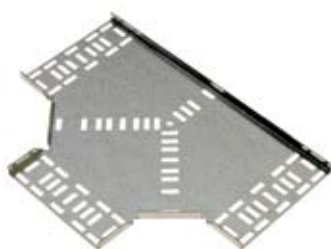
Light Duty System – Universal Risers (Can be used as internal / external)				
Section width				
50mm	75mm	100mm	150mm	225mm
<b>LDR2</b>	<b>LDR3</b>	<b>LDR4</b>	<b>LDR6</b>	<b>LDR9</b>
Section width				
300mm	450mm	600mm	750mm	900mm
<b>LDR12</b>	<b>LDR18</b>	<b>LDR24</b>	<b>LDR30</b>	<b>LDR36</b>





#### Light Duty System – 45° Flat Bend

Section width				
50mm	75mm	100mm	150mm	225mm
<b>LDHB2</b>	<b>LDHB3</b>	<b>LDBH4</b>	<b>LDHB6</b>	<b>LDHB9</b>
Section width				
300mm	450mm	600mm	750mm	900mm
<b>LDHB12</b>	<b>LDHB18</b>	<b>LDHB24</b>	<b>LDHB30</b>	<b>LDHB36</b>



#### Light Duty System – 90° Flat Tee

Section width				
50mm	75mm	100mm	150mm	225mm
<b>LDET2</b>	<b>LDET3</b>	<b>LDET4</b>	<b>LDET6</b>	<b>LDET9</b>
Section width				
300mm	450mm	600mm	750mm	900mm
<b>LDET12</b>	<b>LDET18</b>	<b>LDET24</b>	<b>LDET30</b>	<b>LDET36</b>



#### Light Duty System – 90° Four Way Intersection

Section width				
50mm	75mm	100mm	150mm	225mm
<b>LDFW2</b>	<b>LDFW3</b>	<b>LDFW4</b>	<b>LDFW6</b>	<b>LDFW9</b>
Section width				
300mm	450mm	600mm	750mm	900mm
<b>LDFW12</b>	<b>LDFW18</b>	<b>LDFW24</b>	<b>LDFW30</b>	<b>LDFW36</b>



#### Light Duty System – 180° Straight Graduated Reducer

Section width				
	75mm	100mm	150mm	225mm
	<b>LDSR3</b>	<b>LDSR4</b>	<b>LDSR6</b>	<b>LDSR9</b>
Section width				
300mm	450mm	600mm	750mm	900mm
<b>LDSR12-..</b>	<b>LDSR18-..</b>	<b>LDSR24-..</b>	<b>LDSR30-..</b>	<b>LDSR36-..</b>



### Medium Duty System – Straight Length – 3m

Section width				
50mm	75mm	100mm	150mm	225mm
<b>MDT2</b>	<b>MDT3</b>	<b>MDT4</b>	<b>MDT6</b>	<b>MDT9</b>
Section width				
300mm	450mm	600mm	750mm	900mm
<b>MDT12</b>	<b>MDT18</b>	<b>MDT24</b>	<b>MDT30</b>	<b>MDT36</b>



### Medium Duty System – Straight Coupler – (pair)

Section width				
50mm	75mm	100mm	150mm	225mm
<b>MDSC</b>				
Section width				
300mm	450mm	600mm	750mm	900mm
<b>MDSC</b>				



### Medium Duty System – 90° Flat Bend

Section width				
50mm	75mm	100mm	150mm	225mm
<b>MDFB2</b>	<b>MDFB3</b>	<b>MDFB4</b>	<b>MDFB6</b>	<b>MDFB9</b>
Section width				
300mm	450mm	600mm	750mm	900mm
<b>MDFB12</b>	<b>MDFB18</b>	<b>MDFB24</b>	<b>MDFB30</b>	<b>MDFB36</b>



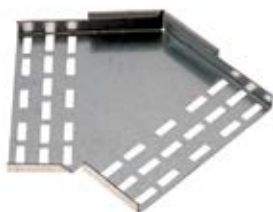
### Medium Duty System – Universal Risers (Can be used as internal/external)

Section width				
50mm	75mm	100mm	150mm	225mm
<b>MDR2</b>	<b>MDR3</b>	<b>MDR4</b>	<b>MDR6</b>	<b>MDR9</b>
Section width				
300mm	450mm	600mm	750mm	900mm
<b>MDR12</b>	<b>MDR18</b>	<b>MDR24</b>	<b>MDR30</b>	<b>MDR36</b>



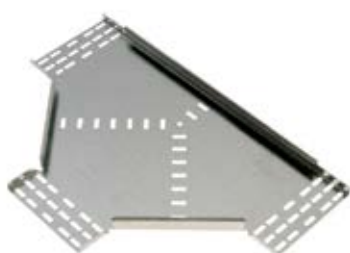
### Tray Suspension C Hanger (Pre-galv)

Section width			
100mm	150mm	225mm	300mm
<b>ATH4</b>	<b>ATH6</b>	<b>ATH9</b>	<b>ATH12</b>



### Medium Duty System – 45° Flat Bend

Section width				
75mm	100mm	150mm	225mm	
<b>MDHB3</b>	<b>MDHB4</b>	<b>MDHB6</b>	<b>MDHB9</b>	
Section width				
300mm	450mm	600mm	750mm	900mm
<b>MDHB12</b>	<b>MDHB18</b>	<b>MDHB24</b>	<b>MDHB30</b>	<b>MDHB36</b>



### Medium Duty System – 90° Flat Tee

Section width				
75mm	100mm	150mm	225mm	
<b>MDET3</b>	<b>MDET4</b>	<b>MDET6</b>	<b>MDET9</b>	
Section width				
300mm	450mm	600mm	750mm	900mm
<b>MDET12</b>	<b>MDET18</b>	<b>MDET24</b>	<b>MDET30</b>	<b>MDET36</b>



### Medium Duty System – 90° Four Way Intersection

Section width				
75mm	100mm	150mm	225mm	
<b>MDFW3</b>	<b>MDFW4</b>	<b>MDFW6</b>	<b>MDFW9</b>	
Section width				
300mm	450mm	600mm	750mm	900mm
<b>MDFW12</b>	<b>MDFW18</b>	<b>MDFW24</b>	<b>MDFW30</b>	<b>MDFW36</b>



### Medium Duty System – 180° Straight Graduated Reducer

Section width				
75mm	100mm	150mm	225mm	
<b>MDSR3-..</b>	<b>MDSR4-..</b>	<b>MDSR6-..</b>	<b>MDSR9-..</b>	
Section width				
300mm	450mm	600mm	750mm	900mm
<b>MDSR12-..</b>	<b>MDSR18-..</b>	<b>MDSR24-..</b>	<b>MDSR30-..</b>	<b>MDSR36-..</b>

### Medium Duty Tray Hold Down Clips



ACKP25



MDHDC



Heavy Duty System – Straight Length – 3m				
Section width				
75mm	100mm	150mm	225mm	
<b>HDT3</b>	<b>HDT4</b>	<b>HDT6</b>	<b>HDT9</b>	
Section width				
300mm	450mm	600mm	750mm	900mm
<b>HDT12</b>	<b>HDT18</b>	<b>HDT24</b>	<b>HDT30</b>	<b>HDT36</b>



Heavy Duty System – Straight Coupler – (pair)				
Section width				
75mm	100mm	150mm	225mm	
<b>HDSC</b>				
Section width				
300mm	450mm	600mm	750mm	900mm
<b>HDSC</b>				



Heavy Duty System – 90° Flat Bend				
Section width				
75mm	100mm	150mm	225mm	
<b>HDFB3</b>	<b>HDFB4</b>	<b>HDFB6</b>	<b>HDFB9</b>	
Section width				
300mm	450mm	600mm	750mm	900mm
<b>HDFB12</b>	<b>HDFB18</b>	<b>HDFB24</b>	<b>HDFB30</b>	<b>HDFB36</b>



Heavy Duty System – Universal Risers (Can be used as internal / external)				
Section width				
75mm	100mm	150mm	225mm	
<b>HDR3</b>	<b>HDR4</b>	<b>HDR6</b>	<b>HDR9</b>	
Section width				
300mm	450mm	600mm	750mm	900mm
<b>HDR12</b>	<b>HDR18</b>	<b>HDR24</b>	<b>HDR30</b>	<b>HDR36</b>

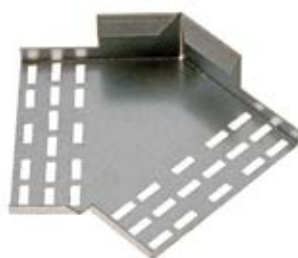


Tray Lids (Generally 25mm Flanges To Suit MD & HD Tray Ranges)				
Section width				
50mm	75mm	100mm	150mm	225mm
<b>TL2</b>	<b>TL3</b>	<b>TL4</b>	<b>TL6</b>	<b>TL9</b>
Section width				
300mm	450mm	600mm	750mm	900mm
<b>TL12</b>	<b>TL18</b>	<b>TL24</b>	<b>TL30</b>	<b>TL36</b>

Tray lids are generally fixed onto the tray outer side walls with self-tappers or similar, these are not supplied.

Tray accessory lids available on request.





Heavy Duty System – 45° Flat Bend				
Section width				
75mm	100mm	150mm	225mm	
<b>HDHB3</b>	<b>HDHB4</b>	<b>HDHB6</b>	<b>HDHB9</b>	
Section width				
300mm	450mm	600mm	750mm	900mm
<b>HDHB12</b>	<b>HDHB18</b>	<b>HDHB24</b>	<b>HDHB30</b>	<b>HDHB36</b>



Heavy Duty System – 90° Flat Tee				
Section width				
75mm	100mm	150mm	225mm	
<b>HDET3</b>	<b>HDET4</b>	<b>HDET6</b>	<b>HDET9</b>	
Section width				
300mm	450mm	600mm	750mm	900mm
<b>HDET12</b>	<b>HDET18</b>	<b>HDET24</b>	<b>HDET30</b>	<b>HDET36</b>



Heavy Duty System – 90° Four Way Intersection				
Section width				
75mm	100mm	150mm	225mm	
<b>HDFW3</b>	<b>HDFW4</b>	<b>HDFW6</b>	<b>HDFW9</b>	
Section width				
300mm	450mm	600mm	750mm	900mm
<b>HDFW12</b>	<b>HDFW18</b>	<b>HDFW24</b>	<b>HDFW30</b>	<b>HDFW36</b>



Heavy Duty System – 180° Straight Graduated Reducer				
Section width				
	100mm	150mm	225mm	
	<b>HDSR4-..</b>	<b>HDSR6-..</b>	<b>HDSR9-..</b>	
Section width				
300mm	450mm	600mm	750mm	900mm
<b>HDSR12-..</b>	<b>HDSR18-..</b>	<b>HDSR24-..</b>	<b>HDSR30-..</b>	<b>HDSR36-..</b>



**M6 x 12mm Roofing Nut and Bolt – 200 / box RNB612**

# Channel & Support Systems

## General Introduction

The Aitkens range of Channel Support Systems, are provided to supply an economical, flexible and efficient method of universal support and fixing for cable trunking, cable tray, cable ladder, lighting systems, pipework and many other electrical and mechanical installations. Generally the system is produced in a nominal 40mm format with linear sections available in 3 and 6m lengths, with a comprehensive range of ex-stock fixings and brackets to suit, provided to comply with the requirements of BS6946, where appropriate.

The systems Bracketry is produced, unless otherwise stated, with Ø14mm fixing holes.

## Standard Material Finishes & Specifications

Systems Lengths are provided from 2.5mm thickness (AE100 range) pre-galvanised material, to EN10142 (BS2989), with a zinc coating weight of 275g/m<sup>2</sup> (Z275), giving a nominal coating thickness of 15µm (microns) or 0.015mm. 1.5mm thickness (AE200 range) is also available.

Systems Fixings (high tensile screws, nuts and washers etc.) are provided with a metric coarse thread format in compliance with BS3692/DIN 933 grade 8.8, being electro-zinc plated.

Systems Bracketry are generally produced from nominal 6mm thickness hot-rolled mild steel to BS1449/4360, being post-galvanised in accordance with BS EN ISO 1461 : 1999 with a coating weight of 610g/m<sup>2</sup>, giving a nominal coating thickness of 86µm (microns) or 0.086mm.

41x41mm Plain Single Channel - 6m & 3m (2.5mm)  
41x41mm Plain Single Channel - 6m & 3m (1.5mm)



Part ref.	Weight (kg)	Thickness (mm)
<b>AE100</b>	15.90	2.5
<b>AE100X3M</b>	7.95	2.5
<b>AE200</b>	10.23	1.5
<b>AE200X3M</b>	5.12	1.5

41x41mm Slotted Single Channel - 6m & 3m (2.5mm)  
41x41mm Slotted Single Channel - 6m & 3m (1.5mm)



Part ref.	Weight (kg)	Thickness (mm)
<b>AE100DSL</b>	14.64	2.5
<b>AE100DSLX3M</b>	7.32	2.5
<b>AE200DSL</b>	9.81	1.5
<b>AE200DSLX3M</b>	4.91	1.5

41x82mm Plain / Slotted 'Back to Back' Channel - 6m



Part ref.	Weight (kg)
<b>AE100/2</b>	31.80
<b>AE100DSL/2</b>	29.28

41x21mm Plain Single Channel - 6m & 3m (2.5mm)  
41x21mm Plain Single Channel - 6m & 3m (1.5mm)



Part ref.	Weight (kg)	Thickness (mm)
<b>AES100</b>	10.74	2.5
<b>AES100X3M</b>	5.37	2.5
<b>AES200</b>	7.45	1.5
<b>AES200X3M</b>	3.73	1.5

41x21mm Slotted Single Channel - 6m & 3m (2.5mm)  
41x21mm Slotted Single Channel - 6m & 3m (1.5mm)



Part ref.	Weight (kg)	Thickness (mm)
<b>AES100SL</b>	7.62	2.5
<b>AES100SLX3M</b>	3.81	2.5
<b>AES200SL</b>	6.62	1.5
<b>AES200SLX3M</b>	3.31	1.5

Long Spring Back Nuts / Short Spring / No Spring



Part ref.	Thread	Spring
<b>M6ZEB</b>	<b>M6</b>	<b>Long</b>
<b>M8ZEB</b>	<b>M8</b>	<b>Long</b>
<b>M10ZEB</b>	<b>M10</b>	<b>Long</b>
<b>M6SSZ</b>	<b>M6</b>	<b>Short</b>
<b>M8SSZ</b>	<b>M8</b>	<b>Short</b>
<b>M10SSZ</b>	<b>M10</b>	<b>Short</b>
<b>M6NS</b>	<b>M6</b>	<b>None</b>
<b>M8NS</b>	<b>M8</b>	<b>None</b>
<b>M10NS</b>	<b>M10</b>	<b>None</b>

Screwed Rod - 3m length



Part ref.	Thread	Weight
<b>M6SR</b>	M6	0.474 kg
<b>M8SR</b>	M8	0.954 kg
<b>M10SR</b>	M10	1.418 kg
<b>M12SR</b>	M12	2.120 kg

Screwed Rod Connectors



Part ref.	Thread
<b>M6SRC</b>	M6
<b>M8SRC</b>	M8
<b>M10SRC</b>	M10

Hexagon Full Nut



Part ref.	Thread
<b>M4HN</b>	M4
<b>M5HN</b>	M5
<b>M6HN</b>	M6
<b>M8HN</b>	M8
<b>M10HN</b>	M10
<b>M12HN</b>	M12

Flat Washer (Form B)



Part ref.	Thread
<b>M4FW</b>	M4
<b>M5FW</b>	M5
<b>M6FW</b>	M6
<b>M8FW</b>	M8
<b>M10FW</b>	M10
<b>M12FW</b>	M12

Penny Washers (dia. 25mm)



Part ref.	Thread
<b>M6PW</b>	M6
<b>M8PW</b>	M8
<b>M10PW</b>	M10

Mudguard Washers (dia. 37mm-40mm)



Part ref.	Thread
<b>M6MGW</b>	M6
<b>M8MGW</b>	M8
<b>M10MGW</b>	M10

Wedge Nuts



Part ref.	Thread
<b>VNM6</b>	M6
<b>VNM8</b>	M8
<b>VNM10</b>	M10

Cast Flange Clamps



Part ref.	Clearance
<b>AFC1</b>	M8
<b>AFC2</b>	M10
<b>AFC3</b>	M12

Hexagon Head Set Screw



Part ref.	Thread	Length
<b>HHM625</b>	M6	25mm
<b>HHM835</b>	M8	35mm
<b>HHM840</b>	M8	40mm
<b>HHM1020</b>	M10	20mm
<b>HHM1025</b>	M10	25mm
<b>HHM1030</b>	M10	30mm
<b>HHM1040</b>	M10	40mm
<b>HHM1225</b>	M12	25mm
<b>HHM1230</b>	M12	30mm
<b>HHM1240</b>	M12	40mm

This is a representative list only, others are available.

Roofing Nut & Bolt



Part ref.	Thread	Length
<b>RNB612</b>	M6	12mm
<b>RNB616</b>	M6	16mm
<b>RNB620</b>	M6	20mm
<b>RNB625</b>	M6	25mm
<b>RNB630</b>	M6	30mm
<b>RNB635</b>	M6	35mm
<b>RNB640</b>	M6	40mm
<b>RNB650</b>	M6	50mm

This is a representative list only, others are available.

Cantilever Arm Type (Flat Plate)



Part ref.	Length	Weight
<b>AE130150FP</b>	150mm	0.764 kg
<b>AE130300FP</b>	300mm	1.160 kg
<b>AE130450FP</b>	450mm	1.556 kg
<b>AE130600FP</b>	600mm	1.952 kg
<b>AE130750FP</b>	750mm	2.348 kg

Cantilever Arm Type (Tooth Type)



Part ref.	Length	Weight
<b>AE130150</b>	150mm	0.664 kg
<b>AE130300</b>	300mm	1.058 kg
<b>AE130450</b>	450mm	1.452 kg
<b>AE130600</b>	600mm	1.846 kg
<b>AE130750</b>	750mm	2.240 kg

Stand Off Bracket



\*Sizes include c/w M6 cage nuts

Part ref.	Width
<b>AE133*</b>	2-3"
<b>AE135*</b>	4-6"
<b>AE136*</b>	9"
<b>AE137*</b>	12"
<b>AE138</b>	18"
<b>AE139</b>	24"

Serrated Washer



Part ref.	Size
<b>M6SW</b>	M6
<b>M8SW</b>	M8
<b>M10SW</b>	M10
<b>M12SW</b>	M12
<b>M20SW</b>	M20
<b>M25SW</b>	M25

Purlin Clamps (to suit M10 studding)



Part ref.  
**APC**

PVC End Caps (White & Black)  
Deep & Shallow



Part ref.	Section Size	Colour
<b>AE145</b>	40 x 40mm	White
<b>AE145BK</b>	40 x 40mm	Black
<b>AE146</b>	40 x 21mm	White
<b>AE146BK</b>	40 x 21mm	Black

'Z' Beam Clamp (tapped M10)



Part ref.  
**AE129Q** Weight  
0.155 kg  
Supplied with cone point screw

Window Beam Clamps (tapped M10)



Part ref. Size Weight  
**AE112Q** 41x41 0.37 kg  
**AE112AQ** 41x21 0.34 kg  
**AE112DQ** 41x82 0.50 kg  
Supplied with cone point screw

M10 x 40mm Cone Point Screw



Part ref. Weight  
**CP1040** 0.031 kg

Girder Beam Clamp



Part ref. To Suit Section Weight  
**AE117Q** AE100 0.422 kg  
**AE118Q** AE100/2 0.461 kg

External Channel Coupler



Part ref. Weight  
**AE140** 0.985 kg

Half Channel Top Hat Bracket



Part ref. Weight  
**AE127** 0.290 kg

Single Channel Top Hat Bracket



Part ref. Weight  
**AE110** 0.350 kg

Double Channel Width Top Hat Bracket



Part ref. Weight  
**AE128** 0.420 kg

Single Channel Base Plate



Part ref. Weight  
**AE113** 0.645 kg

Double Channel Base Plate



Part ref. Weight  
**AE114** 1.310 kg

Single Wing Fitting With Gusset



Part ref. Weight  
**AE119** 1.695 kg

Double Wing Fitting With Gusset



Part ref. Weight  
**AE120** 1.920 kg

Wing Fitting



Part ref. Weight (kg)  
**AE121** 0.725 kg

Beam Clamp Bracket



Part ref. Weight (kg)  
**AE157** 0.120 kg

90° Angle Bracket With Gusset



Part ref. Weight (kg)  
**AE124** 0.420 kg

Obtuse 135° Angle Bracket



Part ref. Weight (kg)  
**AE131** 0.420 kg

Shallow 'Z' Bracket



Part ref. Weight (kg)  
**AE125** 0.180 kg

Single 'Z' Bracket



Part ref. Weight (kg)  
**AE111** 0.205 kg

Double 'Z' Bracket



Part ref. Weight (kg)  
**AE126** 0.285 kg

90° Angle Bracket (2+2)



Part ref. Weight (kg)  
**AE104** 0.310 kg



M6/M8 Square Plate Washer		M10/M12 Square Plate Washer		2 Hole Plate		3 Hole Plate	
							
Part ref. <b>AE10868</b>	Weight (kg) 0.070 kg	Part ref. <b>AE108/1012</b>	Weight (kg) 0.070 kg	Part ref. <b>AE1092</b>	Weight (kg) 0.145	Part ref. <b>AE1093</b>	Weight (kg) 0.220 kg
4 Hole Plate		5 Hole Plate		'L' Plate		Tee Plate	
							
Part ref. <b>AE1094</b>	Weight (kg) 0.285 kg	Part ref. <b>AE1095</b>	Weight (kg) 0.360 kg	Part ref. <b>AE106</b>	Weight (kg) 0.225 kg	Part ref. <b>AE107</b>	Weight (kg) 0.345 kg
90° Angle Bracket (1+1)		90° Angle Bracket (1+1)		90° Angle Bracket (1+2)		90° Angle Bracket (1+3)	
							
Part ref. <b>AE101</b>	Weight (kg) 0.155 kg	Part ref. <b>AE102</b>	Weight (kg) 0.150 kg	Part ref. <b>AE103</b>	Weight (kg) 0.230 kg	Part ref. <b>AE105</b>	Weight (kg) 0.305 kg
Internal Channel Coupler		Channel Suspension Unit		PVC Channel Capping - 3m		Metal Channel Capping - 3m	
							
Part ref. <b>AE141</b>	Weight (kg) 0.308 kg <small>Pre-galvanised steel - screws included</small>	Part ref. <b>AE147</b>	Weight (kg) 0.070 kg <small>Pre-galvanised steel - screws included</small>	Part ref. <b>AE143</b>	Weight (kg) 0.315 kg	Part ref. <b>AE144</b>	Weight (kg) 1.07 kg
Inside Beam Channel Support Bracket (Pair)		Channel Hinged Bracket		Small Channel Girder / Beam Clamp		Large Channel Girder / Beam Clamp	
							
Part ref. <b>AE172</b>	Weight (kg) 0.44kg	Part ref. <b>AE179</b>	Weight (kg) 0.43kg	Part ref. <b>AE115</b>	Weight (kg) 0.15kg	Part ref. <b>AE116</b>	Weight (kg) 0.43kg

Drop In Anchors



Part ref.	Thread
<b>DSM6</b>	M6
<b>DSM8</b>	M8
<b>DSM10</b>	M10
<b>DSM12</b>	M12

Shield Anchors



Part ref.	Thread	Fixture Thread
<b>LB610</b>	M6	10
<b>LB810</b>	M8	10
<b>LB840</b>	M8	40
<b>LB1010</b>	M10	10
<b>LB1025</b>	M10	25
<b>LB1075</b>	M10	75

Eye Bolts



Part ref.	Thread	Length
<b>M680EB</b>	M6	80mm
<b>M6150EB</b>	M6	150mm
<b>M880EB</b>	M8	80mm
<b>M8150EB</b>	M8	150mm
<b>M1080EB</b>	M10	80mm

Concrete Rod Hangers / Dome Anchor Screws



Part ref.	Size
<b>523912</b>	M6 x 35mm Rod Hangers M8 / M10
<b>66950</b>	M6 x 55mm Rod Hangers M8 / M10
<b>058783</b>	M6 x 40mm Dome Anchor Screws

Unlined Pipe Clips



Part ref.	Boss	To Suit	Part ref.	Boss	To Suit
<b>UL2025</b>	M8/M10	1/2"	<b>UL5255</b>	M8/M10	54mm
<b>UL2630</b>	M8/M10	3/4"	<b>UL5868</b>	M8/M10	2"
<b>UL3138</b>	M8/M10	1"	<b>UL7280</b>	M8/M10	2 1/2"
<b>UL4047</b>	M8/M10	1 1/4"	<b>UL8092</b>	M8/M10	3"
<b>UL4653</b>	M8/M10	1 1/2"			

This is a representative list only, others are available.

Lined Pipe Clips



Part ref.	Boss	To Suit	Part ref.	Boss	To Suit
<b>RL1420</b>	M8/M10	15mm	<b>RL4853</b>	M8/M10	1 1/2"
<b>RL2025</b>	M8/M10	22mm	<b>RL5458</b>	M8/M10	54mm
<b>RL2632</b>	M8/M10	28mm	<b>RL5864</b>	M8/M10	2"
<b>RL3239</b>	M8/M10	35mm	<b>RL6872</b>	M8/M10	67mm
<b>RL4047</b>	M8/M10	42mm			

This is a representative list only, others are available.

Concrete Tapping Bolts



Part ref.	Thread	Length
<b>TB860</b>	M8	60mm
<b>TB875</b>	M8	75mm
<b>TB8100</b>	M8	100mm
<b>TB1060</b>	M10	60mm
<b>TB1075</b>	M10	75mm
<b>TB10100</b>	M10	100mm

Ballhangers



Part ref.	Thread
<b>BHSM8</b>	M8
<b>BHSM10</b>	M10
<b>BHSM12</b>	M12

BZP Coachscrews



Part ref.	Thread	Length
<b>CS840</b>	M8	40mm
<b>CS850</b>	M8	50mm
<b>CS860</b>	M8	60mm
<b>CS1050</b>	M10	50mm
<b>CS1060</b>	M10	60mm
<b>CS1070</b>	M10	70mm

Malleable Backplate (Galv / Brass)



Part ref.	Thread	Finish
<b>BPGFMM8</b>	M8	Galv
<b>BPGFMM1</b>	M10	Galv
<b>BPBRFMM1</b>	M10	Brass

All Round Band



Part ref.	Description
<b>SP1</b>	12x5mm Black PVC
<b>SP2</b>	17x7mm Black PVC

Zip Clip & Wire



Part ref.	Description
<b>KL100</b>	2mm Wire Clips
<b>A2W</b>	2mm Wire (100m)

# Galvanised Conduit / Accessories & Conlok Accessories

Conduit Straight Lengths -  
(Galv - Class 4)



Part ref.	Length	Weight
<b>20GC</b>	3.75m	2.88 kg
<b>25GC</b>	3.75m	3.75 kg
<b>20GC3M</b>	3.00m	2.30 kg
<b>25GC3M</b>	3.00m	3.00 kg

Conduit Couplers



Part ref.	Finish	Size
<b>CC20G</b>	Galv	20mm
<b>CC25G</b>	Galv	25mm
Conlok		
<b>CL20GC</b>	Galv	20mm
<b>CL25GC</b>	Galv	25mm

This is a representative list only, others are available.

Malleable Conduit End Boxes



Part ref.	Finish	Size
<b>CBE20G</b>	Galv	20mm
<b>CBE25G</b>	Galv	25mm
Conlok		
<b>CL1G</b>	Galv	20mm
<b>CL8G</b>	Galv	25mm

This is a representative list only, others are available.

Malleable Conduit Through Boxes



Part ref.	Finish	Size
<b>CBTH20G</b>	Galv	20mm
<b>CBTH25G</b>	Galv	25mm
Conlok		
<b>CL2G</b>	Galv	20mm
<b>CL9G</b>	Galv	25mm

This is a representative list only, others are available.

Malleable Conduit Tee Boxes



Part ref.	Finish	Size
<b>CBTE20G</b>	Galv	20mm
<b>CBTE25G</b>	Galv	25mm
Conlok		
<b>CL4G</b>	Galv	20mm
<b>CL11G</b>	Galv	25mm

This is a representative list only, others are available.

Malleable Conduit Angle Boxes



Part ref.	Finish	Size
<b>CBA20G</b>	Galv	20mm
<b>CBA25G</b>	Galv	25mm
Conlok		
<b>CL3G</b>	Galv	20mm
<b>CL10G</b>	Galv	25mm

This is a representative list only, others are available.

Malleable Conduit 'U' Boxes



Part ref.	Finish	Size
<b>CBU20G</b>	Galv	20mm
<b>CBU25G</b>	Galv	25mm
Conlok		
<b>CL6G</b>	Galv	20mm
<b>CL13G</b>	Galv	25mm

This is a representative list only, others are available.

Back Outlet Boxes



Part ref.	Finish	Size
<b>CBBO20G</b>	Galv	20mm
<b>CBBO25G</b>	Galv	25mm

Spacer Bar Saddles



Part ref.	Finish	Size
<b>SB20G</b>	Galv	20mm
<b>SB25G</b>	Galv	25mm

Distance Saddles



Part ref.	Finish	Size
<b>MDS20G</b>	Galv	20mm
<b>MDS25G</b>	Galv	25mm

Male Brass Bushes



Part ref.	Thread	Pattern
<b>CBMS20</b>	M20	Short
<b>CBML20</b>	M20	Long
<b>CBMS25</b>	M25	Short
<b>CBML25</b>	M25	Long
<b>MBBS32</b>	32mm	Short
<b>MBBL32</b>	32mm	Long

This is a representative list only, others are available.

Female Brass Bushes



Part ref.	Thread
<b>FBB20</b>	M20
<b>FBB25</b>	M25
<b>FBB32</b>	32mm
<b>FBB112</b>	1 1/2
<b>FBB2</b>	2"

This is a representative list only, others are available.

Conduit Lockrings



Part ref.	Size
<b>MELR20G</b>	20mm
<b>MELR25G</b>	25mm
<b>MELR32G</b>	32mm
<b>MELR112G</b>	1 1/2

This is a representative list only, others are available.

Conduit Box Lids & Gaskets



Part ref.	Description
<b>CB1G</b>	Galv Box Lids
<b>RG103</b>	Gaskets

Conduit Reducers



Part ref.	Description
<b>AR2520G</b>	25mm-20mm Galvanised Conduit Reducer

Other variations available from stock.

Stock & Die Sets



Part ref.	Description
<b>S232</b>	20mm & 25mm Complete Stock, Die & Guide Set

## Plastic Conduit & Accessories

Conduit Straight Lengths - (Light Duty)  
White x 3m Sold in Pack Qty's



Part ref.	Length	Pack Qty
<b>ALG20</b>	3m	25
<b>ALG25</b>	3m	25

Conduit Straight Lengths - (Heavy Duty)  
White x 3m Sold in Pack Qty's



Part ref.	Length	Pack Qty
<b>AHG20</b>	3m	25
<b>AHG25</b>	3m	25

White Plastic Conduit Through Boxes  
Sold in Box Qty's



Part ref.	Length	Box Qty
<b>PBTH20</b>	20mm	25
<b>PBTH25</b>	25mm	25

White Plastic Conduit Tee Boxes  
Sold in Box Qty's



Part ref.	Length	Box Qty
<b>PBTE20</b>	20mm	20
<b>PBTE25</b>	25mm	20

White Plastic Conduit Angle Boxes  
Sold in Box Qty's



Part ref.	Length	Box Qty
<b>PBA20</b>	20mm	20
<b>PBA25</b>	25mm	20

White Plastic Conduit End Boxes  
Sold in Box Qty's



Part ref.	Length	Box Qty
<b>PBE20</b>	20mm	25
<b>PBE25</b>	25mm	25

White Plastic Conduit Lockrings  
Sold in Box Qty's



Part ref.	Length	Box Qty
<b>APLR20</b>	20mm	200
<b>APLR25</b>	25mm	200

White Plastic Spacer Bar Saddles  
Sold in Box Qty's



Part ref.	Length	Box Qty
<b>APSB20</b>	20mm	100
<b>APSB25</b>	25mm	50

White Plastic Conduit Couplers  
Sold in Box Qty's



Part ref.	Length	Box Qty
<b>APC20</b>	20mm	100
<b>APC25</b>	25mm	50

White Plastic Male Bushes  
Sold in Box Qty's



Part ref.	Length	Box Qty
<b>AMB20</b>	20mm	200
<b>AMB25</b>	25mm	100

White Plastic Male Adapters  
Sold in Box Qty's



Part ref.	Length	Box Qty
<b>APMA20</b>	20mm	100
<b>APMA25</b>	25mm	50

White Plastic Female Adapters  
Sold in Box Qty's



Part ref.	Length	Box Qty
<b>APFA20</b>	20mm	100
<b>APFA25</b>	25mm	50



White Plastic Light / Heavy Gauge Plain Bend  
Sold in Box Qty's



Part ref.	Size	Box Qty
<b>PNBL20</b>	20mm	20
<b>PNBL25</b>	25mm	10
<b>PNBH20</b>	20mm	20
<b>PNBH25</b>	25mm	10

Light / heavy Gauge Bending Springs (each)



Part ref.	Thread
<b>ALGBS20</b>	20mm
<b>ALGBS25</b>	25mm
<b>AHGBS20</b>	20mm
<b>AHGBS25</b>	25mm

White Plastic Conduit Box Lids  
Sold in Box Qty's



Part ref.	Box Qty
<b>APCL</b>	100

White Plastic Spring Clip Saddles  
Sold in Box Qty's



Part ref.	Thread	Box Qty
<b>ASCS20</b>	20mm	200
<b>ASCS25</b>	25mm	100

PVC ADHESIVE (250ML)



Part ref.
<b>ADHI</b>

20mm & 25mm Black PVC Flexible Conduit Glands Sold in Pack Qty's



Part ref.	Thread	Box Qty
<b>DPA20BK</b>	20mm	50
<b>DPA25BK</b>	25mm	100

20mm Black PVC Contractor Pack  
10 Metres / Pack c/w 10 Glands & 10 Clips



Part ref.
<b>DPH20BCP</b>

32mm 1 Gang Surface Box Square Edges & Conduit / Mini Trunking KO's Sold in Box Qty's

25mm Black PVC Contractor Pack  
10 Metres / Pack c/w 10 Glands & 10 Clips



Part ref.
<b>DPH25BCP</b>

32mm 2 Gang Surface Box Square Edges & Conduit / Mini Trunking KO's Sold in Box Qty's

32mm 1 Gang Surface Box Rounded Edges & Conduit / Mini Trunking KO's Sold in Box Qty's



Part ref.	Box Qty
<b>AB1CRC</b>	20

White Plastic Trunking (3m lengths)  
(Accessories also available)



Part ref.	Box Qty
<b>AB1CSC</b>	20



Part ref.	Box Qty
<b>AB2SC</b>	10



Part ref.	Size (mm)
<b>APT22</b>	50x50
<b>APT33</b>	75x75
<b>APT44</b>	100x100

## DB Surrounds

Some examples below of completed works. A multitude of variables are possible for most DB manufacturers. Please get in touch for more details.



# Cable Ladder & Accessories

## General Introduction

Aitkens ladder system comes in two main depth formats 100mm deep (medium duty) or 125mm deep (heavy duty). The medium duty range is a standard stock item. Other depth options are available on request. The system conforms to BS EN 61537:2007 Cable management, cable tray systems and cable ladder system. Mild steel hot dip galvanised: manufactured from steel complying with BS EN 10025-2:2004 and hot dip galvanised after manufacture to BS EN1461:1999. Stainless steel grade (316) available on request.



Medium Duty Straight Lengths (100mm deep) - 3m

Width (mm)		
150	300	450
ALS2150SL	ALS2300SL	ALS2450SL
Width (mm)		
600	750	900
ALS2600SL	ALS2750SL	ALS2900SL



Flat Bends

Width (mm)		
150	300	450
ALS2150FB	ALS2300FB	ALS2450FB
Width (mm)		
600	750	900
ALS2600FB	ALS2750FB	ALS2900FB



Equal Tees

Width (mm)		
150	300	450
ALS2150ET	ALS2300ET	ALS2450ET
Width (mm)		
600	750	900
ALS2600ET	ALS2750ET	ALS2900ET

Internal / External Risers (IR / ER)



Width (mm)		
150	300	450
ALS2150IR/ER	ALS2300IR/ER	ALS2450IR/ER
Width (mm)		
600	750	900
ALS2600IR/ER	ALS2750IR/ER	ALS2900IR/ER



Cross Over (Four Ways)

Width (mm)		
150	300	450
ALS2150FW	ALS2300FW	ALS2450FW
Width (mm)		
600	750	900
ALS2600FW	ALS2750FW	ALS2900FW



Straight Reducers - Left / Right Options Available

Major Entry Size (mm)

Minor Entry Size (mm)	900	750	600	450	300	
	150	ALS2900150SR	ALS2750150SR	ALS2600150SR	ALS2450150SR	ALS2300150SR
	300	ALS2900300SR	ALS2750300SR	ALS2600300SR	ALS2450300SR	
	450	ALS2900450SR	ALS2750450SR	ALS2600450SR		
	600	ALS2900600SR	ALS2750600SR			
	750	ALS2900750SR				





**Ladder Straight Couplers/Pair**  
Part: **ALS2SP**



**Ladder Horizontal (Hasps) Couplers/ Pair**  
Part: **ALS2HSP**



**Ladder Vertical (Vasps) Couplers/Pair**  
Part: **ALS2VSP**



**Ladder Hold Down Clamp**  
Part: **ALHDC**



**Ladder Bolted Hold Down Clamp**  
Part: **ALBHDC**



**Ladder Side Rail Clamp**  
Part: **ALSRC**



**Ladder Suspension Clip (2 part)**  
Part: **ALSC100**

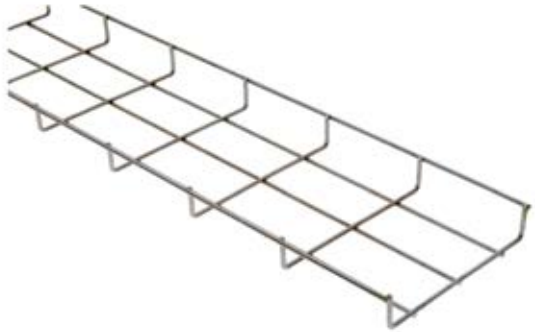


**Ladder Earth Link**  
Part: **LEL**



**Ladder Bolts c/w Nut & Washer**  
Part: **ALNB**

# Cable Basket Systems



## General Introduction

Aitkens cable basket is available in a range of depth formats and finishes, 35mm & 65mm in electro-zinc finish, being the most popular are available from stock. Other depths and finishes are available to order. Bends are site fabricated from straight lengths. A number of accessories are available for supporting and joining the basket.

## General Specification

The Aitkens basket system is produced in a 3m length format and conforms to the following standards: BS EN 61537: 2002, IEC 61537 Finishes: Electro-zinc (EZ) Hot-dip galvanised (HDG).

BSI test reports are available on request.



### 35mm Deep - Straight Length - 3m

Section width			
100mm	150mm	200mm	300mm
AB35100EZ	AB35150EZ	AB35200EZ	AB35300EZ

### 65mm Deep - Straight Length - 3m

Section width			
60mm	100mm	150mm	200mm
AB6560EZ	AB65100EZ	AB65150EZ	AB65200EZ

Section width		
300mm	450mm	600mm
AB65300EZ	AB65450EZ	AB65600EZ

Nut, Bolt & Clamp Assembly

Basket Quick Fixing Coupler

Basket Hold Down Clamp

Fast Fix Unistrut Clip



Part ref.

**ABCA**

Part ref.

**ABQFC**

Part ref.

**ABHDC**

Part ref.

**AQFHDC**

#### Quick Fit Basket Hangers



Part ref. To Suit  
**ABH2** 60mm

Part ref. To Suit  
**ABH4** 100mm  
**ABH6** 150mm  
**ABH8** 200mm  
**ABH12** 300mm

#### Basket Divider x 3 lengths



Part ref. Size  
**ABD35** 35mm  
**ABD65** 65mm

#### 60mm Wide Universal Basket Hold Down Clip



Part ref. **AQFHD60**

#### Conduit Take-Off Plate For Basket



Part ref. **ABFCP**

#### Basket Wall / Floor Brackets



Part ref. To Suit  
**ABWFB4** 100mm  
**ABWFB6** 150mm  
**ABWFB8** 200mm  
**ABWFB12** 300mm

#### Accessory Mounting Plate / Wall Bracket



Part ref. **AAMP**

#### Basket Wall Brackets



Part ref. To Suit  
**ABWB4** 100mm  
**ABWB6** 150mm  
**ABWB8** 200mm

#### Central Suspension Hanger (2 part)



Part ref. **ABSH**

#### Bolt Cutters



Part ref. Description  
**BC18** 18" Bolt Cutters

# Floor Service Box Systems

## FCB Cavity Floor Service Box

The Aitkens floor service outlet box has been designed to meet the needs of both end user and installation engineer, incorporating such unique features as minimal mechanical fixings and individual primary compartment cable outlets. The complete assembly comprises, Hinged Trap, Carpet Surround Trim, Sub-frame, Base Box and outlet mounting plates if required.

The Hinged Trap is designed to be fully reversible in use, and is provided in a grey polyester powder coated finish, to give an aesthetic appearance both open and closed. The standard unit is produced with 6mm or 12mm 'square' recess depths for ease of installation. Alternative variations in recess depth are available to order on request.

The Carpet Surround Trim is produced in a selection of materials, moulded plastic, coated steel, brushed stainless steel and brass. The unit is produced in a single piece format to ensure rigidity, with a bevelled edge to retain floor finish and minimise wear.

The Sub-frame and Base Box units are manufactured in single piece formats, incorporating tile support flanges, with each primary compartment punched to accommodate two 1-gang (BS 1363 - 86mm format) wiring accessories (not included), with integral detachable centre bar to suit various outlets as required. Each compartment option is provided with an independent earth point, also with 2 - Ø20mm and 2 - Ø25mm knockouts.

Outlet Plates, if required are produced with standard BS1363 fixing centres in an 86mm primary width format, please refer to page 39 for standard selection.



### Part Reference Code

Standard Recess Type

primary compt's	trim type	over-trim size (mm)	cut-out size (mm)	6mm	12mm
2	steel coated	195 x 240	180 x 225	FCB26M	FCB212M
	brushed stainless			FCB26S	FCB212S
	brass			FCB26B	FCB212B
3	plastic moulded	279 x 240	266 x 225	FCB36P	N/A
	steel coated			FCB36M	FCB312M
	brushed stainless			FCB36S	FCB312S
	brass			FCB36B	FCB312B
4	steel coated	364 X 240	352 X 225	FCB46M	FCB412M
	brushed stainless			FCB46S	FCB412S
	brass			FCB46B	FCB412B

Standard Section Depth Detail

Variations are available on request, to facilitate a combination of 'deep' plug tops and outlet units.

## FCB Outlet Mounting Plates

The Aitkens outlet mounting panels, are produced from galvanised steel in accordance with BS EN10142. The choice shown are standard, non-standard requirements being available to order on request. All panels are provided with appropriate fixings screws but exclude wiring accessories. All reference panels are 86mm wide to accommodate standard sockets, thereby not limiting the user to specialist panel mounted units where not specified.



**FP03-4Q**

Punched to accept four 'LJ6C' type outlets (36.3 x 22.4mm cut-out)



**FP03-8Q**

Punched to accept eight 'LJ6C' type outlets (36.3 x 22.4mm cut-out)



**FP03-6Q**

Punched to accept six 'LJ6C' type outlets (36.3 x 22.4mm cut-out)



**FP50SFQ**

Punched & fitted with one 2-gang 13A panel mounted switched socket outlet (twin earth type)



**FP04-2Q**

Plain unpunched mounting plate



**FP-07Q**

Converter plate, to adapt two 1-gang apertures to a conventional 2-gang



2-gang 13A surface mounting switched socket outlet.

Whilst the outlet mounting plates shown are the most common types utilised, we also stock a vast selection of alternative punched plates, therefore if the required plate is not shown above please contact our office for specific details of other available options.



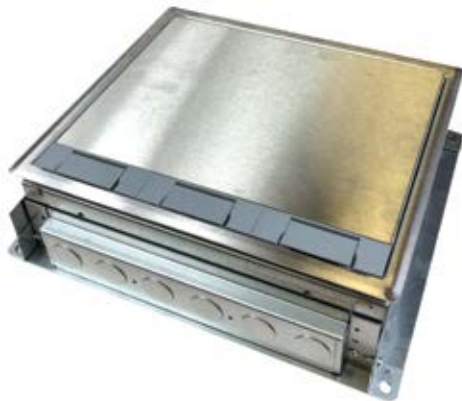
## Non Standard Floor Service Box Systems

With so many different site requirements below are some examples of solutions. Please contact our sales department to discuss your project requirements.

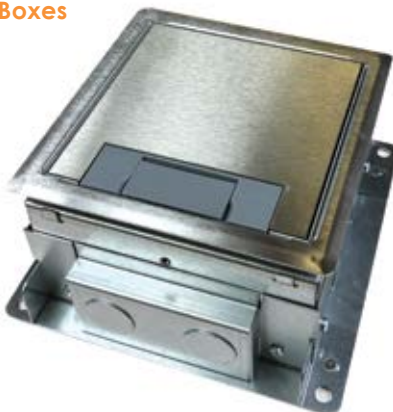
### Circular Service Box Assembly



### Heavy-Duty Service Box Assembly (Car Showroom)



### Mini Service Boxes



## Cavity Floor Trunking

### Section Length

Produced in a standard 3m length format, this unit comprises body, cover, section coupler and associated fixings.

### System Fittings

Designed as complete assemblies, comprising body, cover and integral segregation pieces. The normal range of fittings comprises Flat Bend, Flat Tee and Flat 4 way. All units produced in a gusset format for ease of installation.

### Riser Bend

Provided for interconnect system to supply source or skirting trunking system.

### Header Box

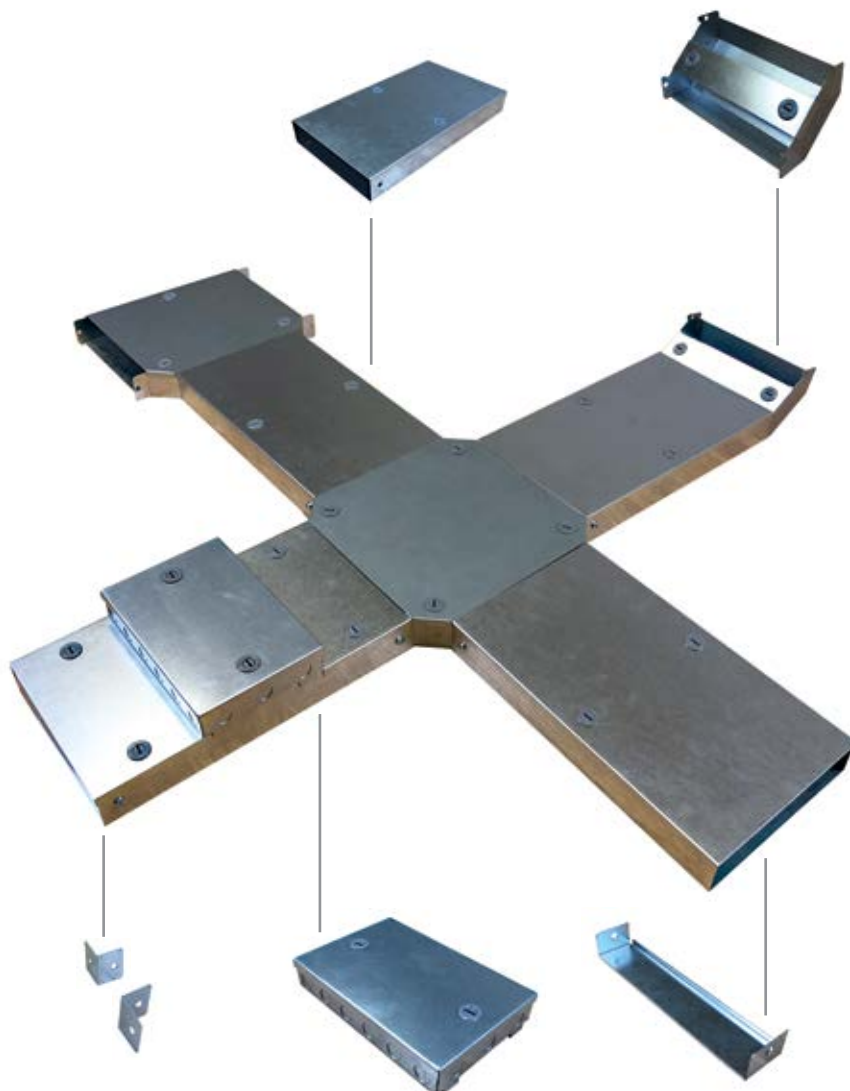
Manufactured in a universal format, the unit is designed to fast fit to Section Length in any location, and has K.O.'s on all sides to accept incoming Ø20mm flexible conduit connection.

### End Flange Set

Supplied as a general fixing angle, to interconnect to a range of items.

### End Cap

To properly terminate the Section Length where required.



Aitkens cavity floor trunking is produced from pre-coated galvanised sheet steel in various section sizes, as shown above, sub-divided into equal segregated compartments.

The system is designed to meet the requirements of BS EN 50085-2 : 2005, from steel in accordance with BS EN 10327 : 2004, developed to offer an economical product group complete with a comprehensive range of purpose designed fittings to meet the most complex of user requirements.

Featured within the system is a totally flexible header box unit which can be easily located in any position throughout the system, utilising quarter turn fixing devices.



### Typical Systems Sections

Section Width (mm)	Section Depth (mm)	comp'ts
375	40	3
225	50	3
150	50	2

## Pedestal Outlet Units

The Aitkens range of pedestal units are produced from galvanised steel in a two piece format, being securely stitched together to provide a robust unit pierced to accept all standard 86mm flush mounted single and two gang socket outlets.

The pedestals are provided in a galvanised finish as standard with the option of alternative colours and materials being available to order on request.

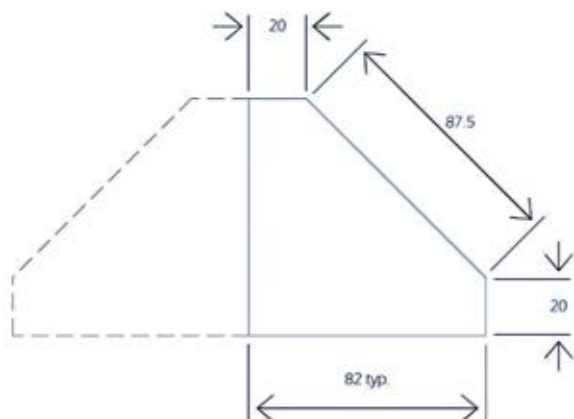
Two Gang Unit



Single Gang Unit



Dual Gang Unit



### Part Reference

surface finish

galvanised

single gang unit

APB1G1KO

two gang unit

APB2G1KO

dual gang unit

APB2GD

## Universal In-Screed Floor Boxes

The standard Aitkens In-Screed type floor box range of products are produced and designed in a universal entry format, to utilise a common adjustable base box assembly with interchangeable side plates to provide the user with a totally flexible unit.

Primarily the system comprises two assemblies, being the 'Floor Service Outlet Box' unit and 'Floor Junction Box' unit.

The service outlet box unit is designed for primary use as a through format unit, with provision for installation of power and data services. Each primary compartment is provided with two integral 1-gang cut-outs to accept a wide range of conventional 86mm format outlets, with the option of utilising FP type standard outlet plate options (see page 39) with standard Aitkens reversible hinged tray and surround trim.

The junction box unit is provided in a versatile multi- way format, incorporating a universal flyover unit. The tray lid is provided as a 'fixed' type utilising standard surround trims.

Boxes are provided pre-set at 70mm with the ability to be adjusted +/- 5mm. Other depths are available on request.

Typical Floor Service Outlet Box assembly



Part Reference Code  
standard recess type

primary compt's	trim type	over- trim size (mm)	box type	6mm
3	plastic moulded steel coated brushed stainless brass	279 x 240	service box	ISC22525SB
				ISC22525SBP
				ISC22525SBS
				ISC22525SBB
3	plastic moulded steel coated brushed stainless brass	279 x 240	universal junction box	ISC22525JB
				ISC22525JBP
				ISC22525JBS
				ISC22525JBB
universal side plates		plain 020mm conduit entry	ISB3PS	
		plain 025mm conduit entry	ISB3CS	





## In-Screed Floor Ducting

### Section Length

Produced in a standard 3m length format from pre-galvanised steel in accordance with the requirements of BS4678 Part 2, this unit comprises body, cover, section coupler mid section clamp and associated fixings.

### Universal Junction Box

Designed as a complete assembly, nominally 260 x 260mm, comprising Trap and Carpet Trim, adjustable depth base box unit and integral segregation flyover assembly (see page 43).

### Riser Bend

Provided for interconnect system to supply source or skirting trunking system.

### Service Outlet Box

Produced in a through format, the unit comprises trap and edge trim assembly, adjustable depth base box unit and segregation unit. For selection of outlet panels please refer to page 39.

Aitkens In-Screed Floor Duct System is manufactured from galvanised steel in accordance with BS EN 10327 : 2004 and is designed to comply with the requirements of BS4678 Part 2.

The duct incorporates an integral quick assembly coupler and intermediate fixing clamps, to ensure an efficient site installation. Couplers and intermediate fixing are pierced to accommodate fixings to floor slab.

The standard system is designed around a screed variance of 65 - 75mm, however non-standard variations are available on request.



	Part Reference
3m - 225 x 25mm 3 compartment ducting length (supplied with coupler & intermediate clamp)	ISC22525Q
225 x 25mm coupler assembly	ISC22525CS
225 x 25mm riser bend assembly	ISC22525IB
225 x 25mm horizontal bend assembly	ISC22525FB

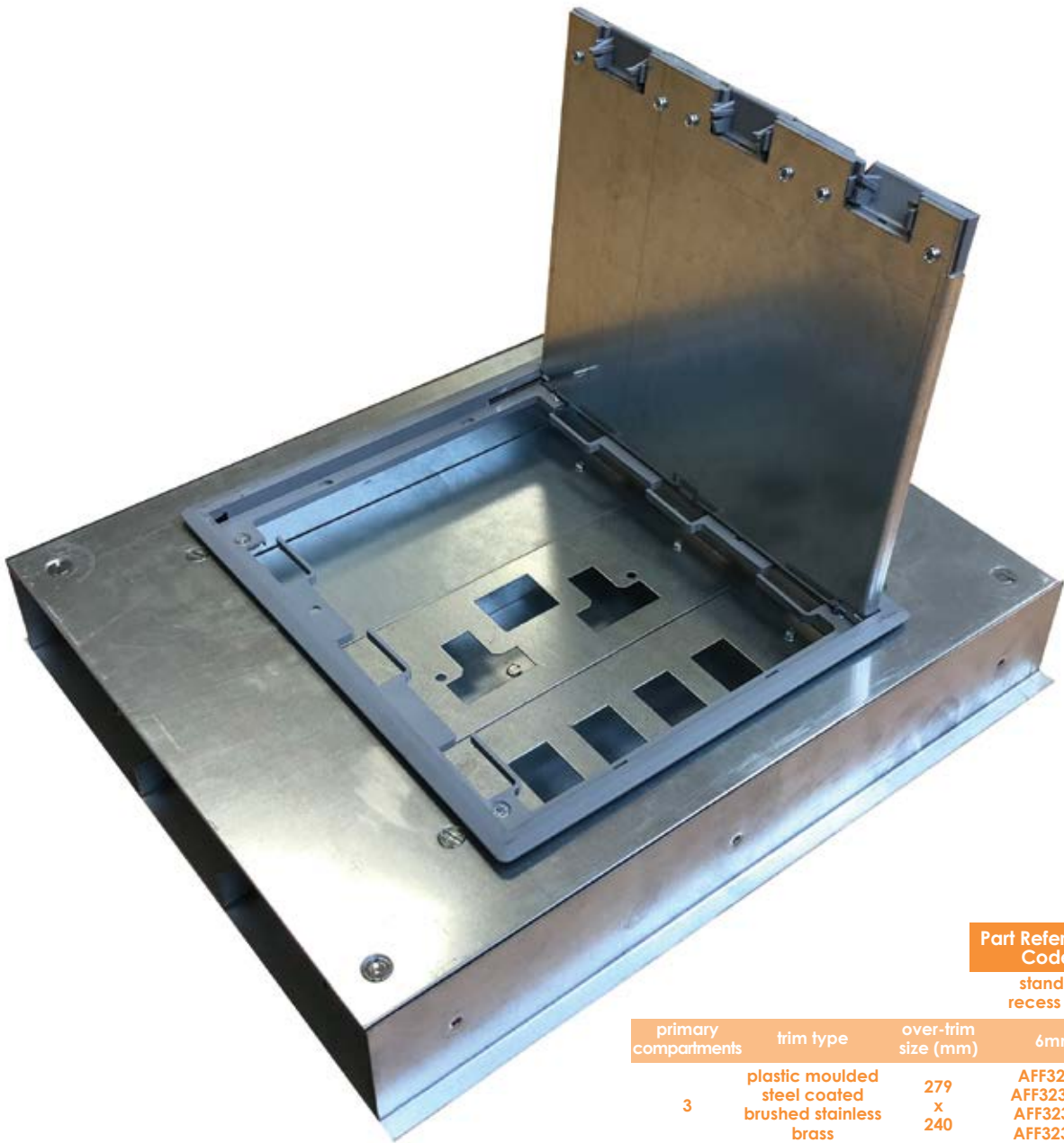


## Modular Flushfloor Floor Service Boxes

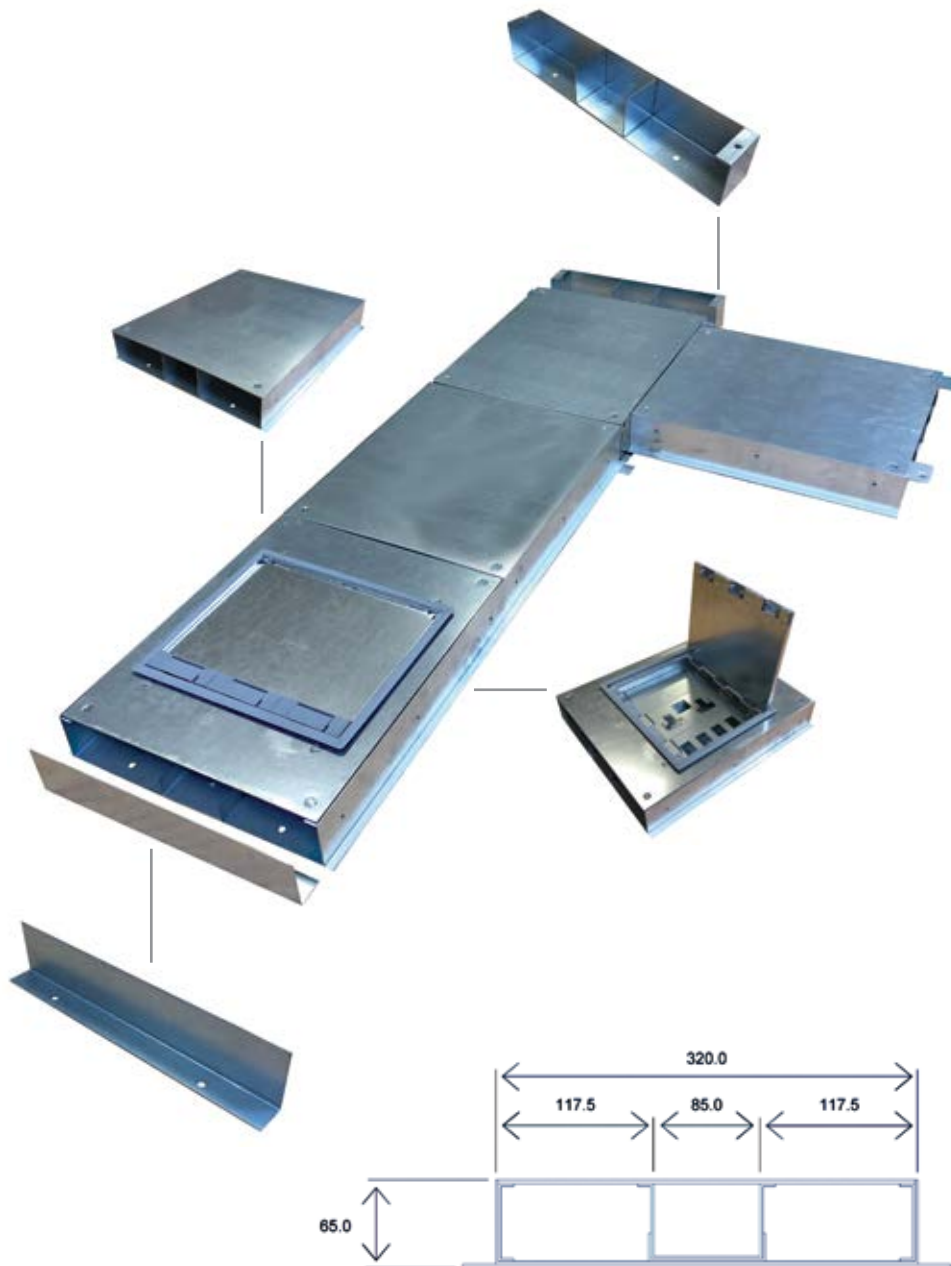
The standard Aitkens Modular Flushfloor type box range of products are produced and designed in a flexible fix format, to enable the box assembly to be located in any linear position to provide the user with a totally flexible service layout.

Primarily the assembly comprises three sub-components, being the reversible hinged tray and surround trim unit, the detachable subframe collar and the modular cover plate.

The service outlet box unit is designed with provision for installation of power and data services. Each primary compartment is provided with two integral 1-gang cut- outs to accept a wide range of conventional 86mm format outlets, with the option of utilising FP type standard outlet plate options (see page 39) with standard Aitkens reversible hinged tray and surround trim.



Part Reference Code			
standard recess type			
primary compartments	trim type	over-trim size (mm)	6mm
3	plastic moulded steel coated brushed stainless brass	279 x 240	AFF323SB
			AFF323SBM
			AFF323SBS
			AFF323SBB



**IMPORTANT: Section to be laid on a ribbon screed to prevent possible deflection.**

## Modular Flush Floor

### Section Length

Produced in a standard 2m length format, this unit comprises body, 5 modular covers, section coupler and associated fixings.

### Riser Bend

Provided for interconnecting system to supply source or skirting trunking system.

### Modular Outlet Box

Produced as a complete assembly, this unit adopts the standard Aitkens Hinged Tray Lid and Carpet Surround Trim coupled with a single piece subframe and modular lid. The unit is produced to accept outlet mounting plates (see page 39).

### Junction Box

Supplied as a universal part, the unit is supplied with three plain sides to facilitate use as a bend, tee or intersection. Also included within the unit is a full segregation flyover assembly.

### End Cap

To properly terminate the Section Length where required.

Aitkens Modular Flushfloor Trunking is manufactured as standard in 2.0m lengths, from high quality galvanised steel to BS EN 10327 : 2004, and features 400mm modular covers throughout to permit service outlet units to be fitted in any position within the trunking section run.

Covers are produced from 3mm thick steel, and are retained by machine screws into specialist cover fixing bridges to ensure complete flexibility. Section partitions are designed as a two part unit to match modular covers to minimise site installation costs. The system includes a comprehensive range of components, to complete a full product listing.

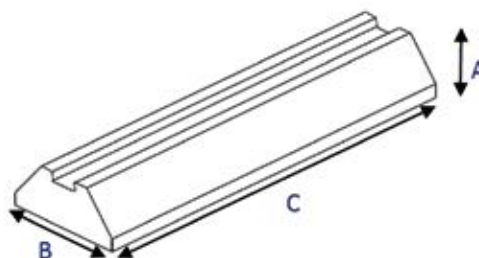
Part Reference	
2m - 320 x 65mm 3 compartment trunking length (supplied with coupler)	AFF323Q
320mm coupler unit	AFF323CS
320 x 65mm riser bend assembly	AFF323IB
universal intersection unit assembly	AFF323JB
320 x 65mm end cap unit	AFF323EC

## Roof Support Systems

### General Introduction

Aitkens roof support systems come in a number of ranges to suit all applications. System (AFX) is for supporting pipe work, cable trays and small outdoor condensing units. This range is also available in an extra high range for supporting heat pumps, condensers, pipe and cable trays. Our (AHFF) range is our base solution for supporting services on roofs.

Other ranges available but not detailed here are our (ADF) range this is a spherical double foot for supporting anything on your roof from pipe work, ductwork, cable trays, H frames, air conditioning equipment, plant rooms and combinations of all the above. Our (AWT) range which are our walkway & anti-vibration mats for establishing clear walkways on roofs. The (AAV) range is also available, this product line is used for vibration control and the solutions come in the form of strips, pads & slabs. Contact our sales team for more info on these products.



Our 7 feet of the AFX range are a practical and versatile support solution for pipe work and cable trays. The system can also be used for smaller outdoor condensing units or air source heat pump installations. The range have a 41mm x 21mm extruded aluminum channel recessed into the top face allowing the end user to use standard strut fixings to secure the services to the feet. The range of products are made of durable recycled rubber, which offers built-in anti vibration and makes it both economically and environmentally friendly.

Product Code	Model	Height (mm) A	Width (mm) B	Length (mm) C	Max.Loading per foot (kg)	AFX Weight (kg)
AFX250	250	100	185	250	160	2.5
AFX400	400	100	185	400	240	4.5
AFX500	500	80	160	520	400	4.75
AFX600	600	100	185	600	450	8.15
AFX1000	1000	100	185	1000	645	12.2
AFX250LOW	250 Low Profile	50	132	250	160	1.5
AFX400LOW	400 Low Profile	50	132	400	240	2.46

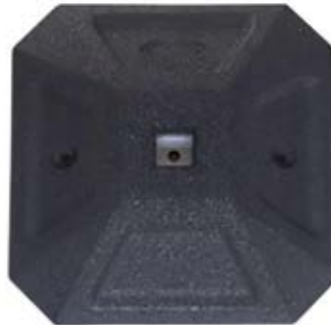
### Material Specification

SBR-recycled rubber, bound using a ratio of high quality moisture curing polyurethane pre-polymer. BS7188: 1989 & BS5696 part 3: 1979. The working conditions make the product suitable for internal or external applications in Temperatures between -40C to +80C.

## AHFF Range - Base Solutions

The AHFF Frame foot is a quick, versatile and economical solution for supporting anything on your roof from pipe work, ductwork, cable trays, air conditioning equipment to plant rooms. You provide your own strut, keeping the installations low cost and totally flexible by fabricating the frameworks on-site. Available as a 41mm or 50mm core insert. Where a greater load spread is required you can upgrade to a 500mm x 500mm square foot. These are sold as individual products, therefore, there is NO wasted packaging or assembly kits surplus to requirements during installations.

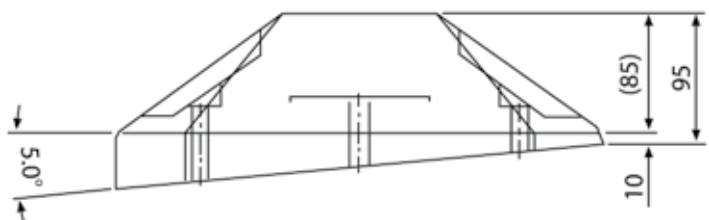
For securing your Ductwork and light weight plant why not use Aitkens 12kg or 25kg foot for extra ballast for sloped roofs, the 'Angled' feet have been moulded uniquely as one component in either 2.5° or 5° angles.



Product Code	Model	Foot Size (mm)	Max. Loading per foot (kg)	Weight per foot (kg)	Load Bearing (Steel Plate)
AHFF1	Support Systems 350	350	200	5.2	95mm <sup>2</sup> x 4mm
AHFF58	Support System 350 (81mm x 41mm back to back)	350	200	5.2	95mm <sup>2</sup> x 4mm
AHFF2	Angled Foot 350 @ 2.5°	350	200	6.6	95mm <sup>2</sup> x 4mm
AHFF3	Angled Foot 350 @ 5°	350	200	7.2	95mm <sup>2</sup> x 4mm
AHFF27	Support Systems 350 - 12kg Heavy Ballast	350	200	12	95mm <sup>2</sup> x 4mm
AHFF4	Support Systems 500	500	250	12.9	95mm <sup>2</sup> x 4mm
AHFF5	Angled Foot 500 @ 2.5°	500	250	16.1	160mm <sup>2</sup> x 4mm
AHFF6	Angled Foot 500 @ 5°	500	250	17.5	160mm <sup>2</sup> x 4mm
AHFF26	Support Systems 500 - 25kg Heavy Ballast	500	250	25	160mm <sup>2</sup> x 4mm

## Material Specification

SBR-recycled rubber, bound using a ratio of high quality moisture curing polyurethane pre-polymer. BS7188: 1989 & BS5696 part 3: 1979. The working conditions make the product suitable for internal or external applications in Temperatures between -40C to +80C.





# Consumables

## General Introduction

A range of consumables perfect to complement our already extensive range of first fix products through our distribution depots. Competitively priced and package completers.

### Holesaws | Pilot Drills | Arbors



Part ref.	Size	Box Qty
<b>H2532</b>	20mm	Each
<b>H0100</b>	25mm	Each
<b>H0114</b>	32mm	Each
<b>H0112</b>	38mm	Each
<b>H0196</b>	40mm	Each
<b>H0200</b>	51mm	Each
<b>H0212</b>	64mm	Each
<b>APD</b>	Aitken Pilot Drill	
<b>A1</b>	8.75mm Hex Arbour - 14mm - 30mm	
<b>A2</b>	11mm Hex Arbour - 32mm	

### Connector Strip



Part ref.	Amp	Pack Qty
<b>NY5</b>	5	10
<b>NY15</b>	15	10
<b>NY30</b>	30	10

### Sleeving Supplied in Hanks / Drums



Part ref.	Size
<b>SL3</b>	3mm Green/Yellow Sleeving
<b>SL4</b>	4mm Green/Yellow Sleeving
<b>SL6</b>	6mm Green/Yellow Sleeving
<b>SL3BU</b>	3mm Blue Sleeving
<b>SL4BU</b>	4mm Blue Sleeving
<b>SL6BU</b>	6mm Blue Sleeving
<b>SL3BR</b>	3mm Brown Sleeving
<b>SL4BRN</b>	4mm Brown Sleeving
<b>SL6BRN</b>	6mm Brown Sleeving

### Indoor Glands Gland Packs BW



Part ref.	Size	Pack
<b>PA114</b>	20S BW Gland	2
<b>PA115</b>	20mm BW Gland	2
<b>PA116</b>	25mm BW Gland	2
<b>PA117</b>	32mm BW Gland	2
<b>PA118</b>	40mm BW Gland	1
<b>PA119</b>	50mm BW Gland	1

### Cable Cleats



Part ref.	Diameter	Part ref.	Diameter
<b>MS5</b>	12.7 mm max	<b>MS10</b>	25.4 mm max
<b>MS6</b>	15.2 mm max	<b>MS11</b>	27.7 mm max
<b>MS7</b>	17.8 mm max	<b>MS12</b>	30.4 mm max
<b>MS8</b>	20.3 mm max	<b>MS14</b>	35.6 mm max
<b>MS9</b>	22.8 mm max	<b>MS16</b>	40.6 mm max

### Outdoor Glands Gland Packs CW



Part ref.	Size	Pack
<b>PA114CW</b>	20S CW Gland	2
<b>PA115CW</b>	20mm CW Gland	2
<b>PA116CW</b>	25mm CW Gland	2
<b>PA117CW</b>	32mm CW Gland	2
<b>PA118CW</b>	40mm CW Gland	1
<b>PA119CW</b>	50mm CW Gland	1

### Insulating Tape



Part ref.	Size
<b>ITBU</b>	19mm x 20 mtr Blue
<b>ITGRY</b>	19mm x 20 mtr Grey
<b>ITWH</b>	19mm x 20 mtr White
<b>ITBK</b>	19mm x 20 mtr Black
<b>ITGY</b>	19mm x 20 mtr Green/Yellow
<b>ITBR</b>	19mm x 20 mtr Brown

### Copper Tube Lugs



Part ref.	Size	Stud
<b>KCL66</b>	6mm	6mm
<b>KCL108</b>	10mm	8mm
<b>KCL1012</b>	16mm	12mm
<b>KCL2510</b>	25mm	10mm
<b>KCL3512</b>	35mm	12mm
<b>KCL5012</b>	50mm	12mm
<b>KCL7016</b>	70mm	16mm
<b>KCL9512</b>	95mm	12mm

This is a representative list only, others are available.

### SDS Drill Bit



Part ref.	Size
<b>SD05160</b>	5mm x 160mm
<b>SD06110</b>	6mm x 110mm
<b>SD07110</b>	7mm x 110mm
<b>SD08110</b>	8mm x 110mm
<b>SD10110</b>	10mm x 110mm
<b>SD12160</b>	12mm x 160mm
<b>SD14166</b>	14mm x 166mm

This is a representative list only, others are available.



## Cable Ties - Stainless Steel



Part ref.	Size	Pack
<b>SST1316</b>	150mm x 4.6mm	100
<b>SST2316</b>	200mm x 4.6mm	100
<b>SST3816</b>	300mm x 4.6mm	100
<b>SST4316</b>	360mm x 4.6mm	100

## Cable Ties - Nylon



Part ref.	Size	Pack
<b>CTB14036</b>	140mm x 3.6mm	100
<b>CTB16048</b>	160mm x 4.8mm	100
<b>CTB20048</b>	200mm x 4.8mm	100
<b>CTB29048</b>	290mm x 4.8mm	100
<b>CTB30078</b>	300mm x 7.8mm	100
<b>CTB37078</b>	370mm x 7.8mm	100

## Appleby Dry Lining Boxes



Part ref.	Description
<b>SB639</b>	Circular Dry Lining Box
<b>619</b>	35mm 1 Gang Dry Lining Box
<b>629</b>	35mm 2 Gang Dry Lining Box
<b>632</b>	47mm 1 Gang Dry Lining Box
<b>631</b>	47mm 2 Gang Dry Lining Box

## Aitkens Dry Lining Boxes



Part ref.	Description
<b>ADLB1</b>	35mm 1 Gang Dry Lining Box
<b>ADLB2</b>	35mm 2 Gang Dry Lining Box
<b>ADLB147</b>	47mm 1 Gang Dry Lining Box
<b>ADLB247</b>	47mm 2 Gang Dry Lining Box

## High Speed Drillbit



Part ref.	Size	Part ref.	Size
<b>AE1/4HSS</b>	1/4"	<b>AE6HSS</b>	6mm
<b>AE1/8HSS</b>	1/8"	<b>AE7HSS</b>	7mm
<b>AE4HSS</b>	4mm	<b>AE8HSS</b>	8mm
<b>AE5HSS</b>	5mm	<b>AE10HSS</b>	10mm

## Insulated Terminals



Part ref.	Size	Type
<b>KV104</b>	1.5mm Red - 4mm Stud	Ring
<b>KV204</b>	2.5mm Blue - 4mm Stud	Ring
<b>KV504</b>	4-6mm Yellow - 4mm Stud	Ring
<b>KV104A</b>	1.5mm Red - 4mm Stud	Fork
<b>KV504A</b>	6mm Yellow - 4mm Stud	Fork
<b>KVC010</b>	1.5mm Red - Splice Terminal	Splice
<b>KVPC010</b>	1.5mm Red - 12mm	Pin

This is a representative list only, others are available.

## Nylon Dome Cable Gland



Part ref.	Size	Cable Size	Colour
<b>M20DRD</b>	20mm	6-12mm	Red
<b>M25DWH</b>	25mm	13-18mm	White
<b>M32DGRY</b>	32mm	14-21mm	Grey
<b>M40DBK</b>	40mm	22-32mm	Black

This is a representative list only, others are available.

## Brass Pan Head Slotted Machine Screw



Part ref.	Size
<b>BP410</b>	M4 x 10mm
<b>BP412</b>	M4 x 12mm
<b>BP416</b>	M4 x 16mm
<b>BP420</b>	M4 x 20mm
<b>BP425</b>	M4 x 25mm
<b>BP430</b>	M4 x 30mm
<b>BP435</b>	M4 x 35mm
<b>BP440</b>	M4 x 40mm

## Earth Bars



Part ref.	Description
<b>AEBAR4</b>	4 way CU Earth Bar (no link)
<b>AEBAR6</b>	6 way CU Earth Bar (no link)
<b>AEBAR8</b>	8 way CU Earth Bar (no link)
<b>AEB41</b>	4 way CU Earth Bar c/w link
<b>AEB61</b>	6 way CU Earth Bar c/w link
<b>AEB81</b>	8 way CU Earth Bar c/w link
<b>AEB101</b>	10 way CU Earth Bar c/w link

This is a representative list only, others are available.

## Nickel Plated Socket Screws



Part ref.	Size
<b>BNC3512</b>	3.5 x 12mm
<b>BNC3520</b>	3.5 x 20mm
<b>BNC3525</b>	3.5 x 25mm
<b>BNC3535</b>	3.5 x 35mm
<b>BNC3540</b>	3.5 x 40mm
<b>BNC3550</b>	3.5 x 50mm
<b>BNC3575</b>	3.5 x 75mm

## Galv Spray Paint



Part ref.
<b>GSP</b>

## Plastic Rod End Caps



Part ref.	Description	Pack Qty
<b>REC8B</b>	8mm Black Rod End Caps	100
<b>REC10B</b>	10mm Black Rod End Caps	100
<b>REC8W</b>	8mm White Rod End Caps	100
<b>REC10W</b>	10mm White Rod End Caps	100

Galv & Black Enamel Adaptable Boxes



Part ref.	Finish	Size
<b>AB332GKO</b>	Galv	3x3x2
<b>AB332BKO</b>	B/E	3x3x2
<b>AB442GKO</b>	Galv	4x4x2
<b>AB442BKO</b>	B/E	4x4x2
<b>AB662GKO</b>	Galv	6x6x2
<b>AB662BKO</b>	B/E	6x6x2

This is a representative list only, others are available.

Switch & Socket Boxes



Part ref.	Description
<b>SB125</b>	1 Gang 25mm
<b>SB225</b>	2 Gang 25mm
<b>SB135</b>	1 Gang 35mm
<b>SB235</b>	2 Gang 35mm
<b>SB147</b>	1 Gang 47mm
<b>SB247</b>	2 Gang 47mm

This is a representative list only, others are available.

Alloy Speedplugs  
Sold in Box Qty's



Part ref.	Description	Box Qty
<b>A059360</b>	Aitkens Alloy Speedplugs complete with screws	100

Jackchain



Part ref.	Box Qty
<b>JC</b>	10 meters

Raw Plugs - Red / Brown  
Sold in Box Qty's



Part ref.	Size	Quantity
<b>RPLUG</b>	6-8-10/6mm	100
<b>BPLUG</b>	10-12-14/7mm	100

Telescopic Stud Wall Bracket  
Sold in Box Qty's



Part ref.	Box Qty
<b>ASWB1624</b>	50

Brass Hex Head Sets  
Sold in Pack Qty's



Part ref.	Size	Pack Qty
<b>BH612</b>	M6 x 12mm	100
<b>BH820</b>	M8 x 20mm	100
<b>BH1020</b>	M10 x 20mm	100

This is a representative list only, others are available.

Brass Hex Nuts  
Sold in Pack Qty's



Part ref.	Size	Pack Qty
<b>M6BHN</b>	M6	100
<b>M8BHN</b>	M8	100
<b>M10BHN</b>	M10	100

Brass Flat Washers  
Sold in Pack Qty's



Part ref.	Size	Pack
<b>M6BFW</b>	M6	100
<b>M8BFW</b>	M8	100
<b>M10BFW</b>	M10	100

Tek Screws  
Sold in Box Qty's



Part ref.	Description	Box
<b>TSHW5.5-25-3</b>	5.5x25mm Self Drilling TEK Screw	250

Waferhead Screws  
Sold in packs of 100



Part ref.	Description
<b>7904213</b>	4.2x13mm Waferhead Self Drilling Screw PH2
Part ref.	Description
<b>255770</b>	4.2x25mm Waferhead Self Drilling Screw PH2

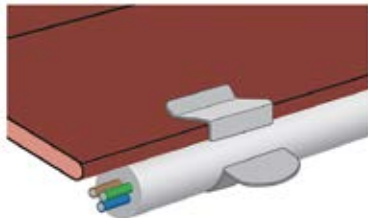
Hollow Wall Anchors  
Sold in packs of 100



Part ref.	Description
<b>061120</b>	M6x46mm Hollow Wall Anchor 4-16mm fixing (10mm hole)
Part ref.	Description
<b>061130</b>	M6x59mm Hollow Wall Anchor 16-30mm fixing (10mm hole)

# Spring Steel Clips

Cable Run Edge Clips - Boxes 100



Code.	Girder Size	Cable Diameter
<b>ASEC67</b>	2 – 4 mm	6 – 7 mm
<b>ASEC89</b>	2 – 4 mm	8 – 9 mm
<b>ASEC1011</b>	2 – 4 mm	10 – 11 mm
<b>ASEC1214</b>	2 – 4 mm	12 – 14 mm
<b>ASEC1518</b>	2 – 4 mm	15 – 18 mm

This is a representative list only, others are available.

Beam Clip - Boxes 100



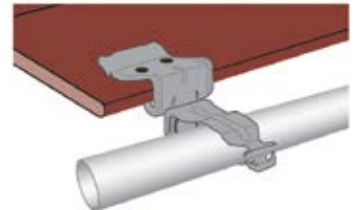
Code.	Girder Size
<b>AHH154</b>	1.5 – 4 mm
<b>AHH410</b>	4 – 10 mm
<b>AHH1015</b>	10 – 15 mm
<b>AHH1520</b>	15 – 20 mm
<b>AHH2330</b>	23 – 30 mm

Beam Clip With Cable Tie - Boxes 25



Code.	Girder Size
<b>AHH154CTMET</b>	1.5 – 4 mm
<b>AHH410CTMET</b>	4 – 10 mm
<b>AHH1015CTMET</b>	10 – 15 mm
<b>AHH1520CTMET</b>	15 – 20 mm

Beam Clip With Conduit Combination - Boxes 25



Code.	Girder Size	Conduit Size
<b>AHH154OCC1822</b>	1.5 – 4 mm	18 – 22 mm
<b>AHH154OCC2230</b>	1.5 – 4 mm	22 – 30 mm
<b>AHH410OCC1822</b>	4 – 10 mm	18 – 22 mm
<b>AHH410OCC2230</b>	4 – 10 mm	22 – 30 mm
<b>AHH1015OCC1822</b>	10 – 15 mm	18 – 22 mm
<b>AHH1015OCC2230</b>	10 – 15 mm	22 – 30 mm
<b>AHH1520OCC1822</b>	15 – 20 mm	18 – 22 mm
<b>AHH1520OCC2230</b>	15 – 20 mm	22 – 30 mm

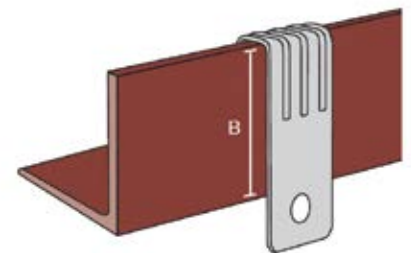
Beam Clip With Threaded Rod - Boxes 25



Code.	Girder Size	Rod Size
<b>AHH154VRH8T</b>	1.5 – 4 mm	M8
<b>AHH154VRH10T</b>	1.5 – 4 mm	M10
<b>AHH410VRH8T</b>	4 – 10 mm	M8
<b>AHH410VRH10T</b>	4 – 10 mm	M10

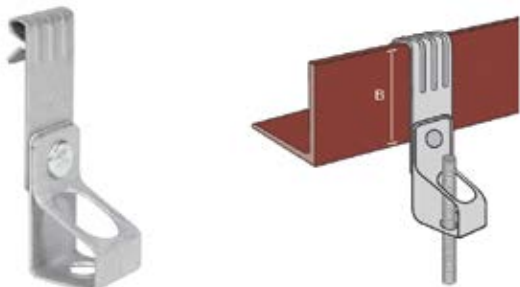
This is a representative list only, others are available.

Hanger Clip - Box 100



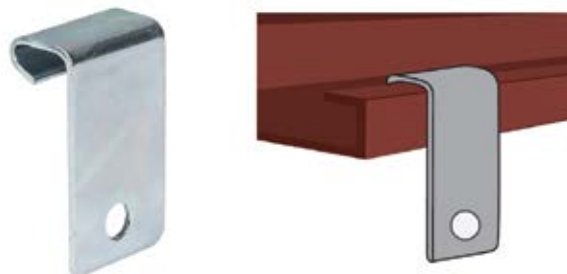
Code.	Girder Size	B.mm
<b>AVH155</b>	1.5 – 5 mm	30
<b>AVH57</b>	5 – 7 mm	30
<b>AVH410</b>	4 – 10 mm	60

Hanger Clip With Threaded - Rod Hanger Box 25



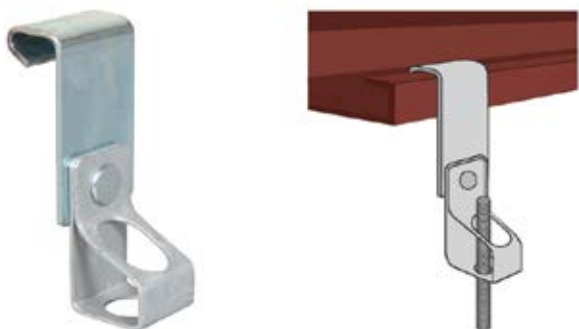
Code.	Girder Size	B.mm	Rod Size
<b>AVH155VRH8T</b>	1.5 – 5 mm	30	M8
<b>AVH155VRH10T</b>	1.5 – 5 mm	30	M10
<b>AVH57VRH8T</b>	5 – 7 mm	30	M8
<b>AVH57VRH10T</b>	5 – 7 mm	30	M10
<b>AVH410VRH8T</b>	4 – 10 mm	60	M8
<b>AVH410VRH10T</b>	4 – 10 mm	60	M10

Purlin Clip - Box 100



Code.	Girder Size
<b>ARCC125</b>	3.0 mm

Purlin Clip Rod Hanger - Box 25



Code.	Girder Size
<b>ARCC125VRH8T</b>	3.0 mm M8
<b>ARCC125VRH10T</b>	3.0 mm M10

Angled Profile Clip With Rod Hanger - Box 25



Code.	Girder Size	Rod Size
<b>ARH155VRH8T</b>	1.5 – 5 mm	M8
<b>ARH155VRH10T</b>	1.5 – 5 mm	M10

Rod Hanger Fixing - Box 25



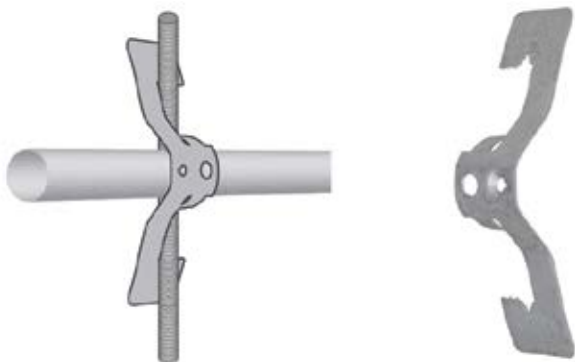
Code.	Girder Size	Box Qty
<b>AH44VRH8T</b>	M8	25
<b>AH44VRH10T</b>	M10	25

T Bar Ceiling Clip & Nut



Code.	Load Kg	Stud	Box Qty
<b>AX16S</b>	20	M6 X16	100

Conduit Clip - Box 100



Code.	Rod Size	Load Kg	Conduit Size
<b>ARC313T</b>	M6/M8/M10	22	20
<b>ARC320T</b>	M8/M10	22	25

Clip With Light Cable Tray Support Bracket - Box 25



Code.	Rod Size	Load Kg
<b>ARC313TCTB70H</b>	M6/M8/M10	7

Threaded Rod Hanger - Box 100



Code.	Rod Size
<b>AVRH8T</b>	M8
<b>AVRH10T</b>	M10
<b>AHH1015</b>	10 – 15 mm
<b>AHH1520</b>	15 – 20 mm
<b>AHH2330</b>	23 – 30 mm





**Discover Aitkens, a family-owned Glasgow based leader in first-fix products and cable management solutions.**

With cutting-edge manufacturing, competitive pricing, and a commitment to customer satisfaction, we're here to meet the needs of the modern electrical industry. Visit our website for full information.



[www.aitkenscablemanagement.co.uk](http://www.aitkenscablemanagement.co.uk)



**Head Office**

5 Mathieson Road  
Rutherglen, Glasgow,  
G73 1DA.

**T** 0141 647 3111

**F** 0141 613 1338

**E** [sales@aitkenscotland.co.uk](mailto:sales@aitkenscotland.co.uk)

**Leeds Branch**

Unit 2A Silver Royd Hill,  
Silver Royd Business Park,  
Silver Royd Hill, LS12 4QQ.

**T** 0113 255 1111

**F** 0113 255 1101

**E** [leeds@aitkencablemanagement.co.uk](mailto:leeds@aitkencablemanagement.co.uk)

**Manchester Branch**

Unit N9 Central Park Trading Estate,  
Mosley Road, Trafford Park,  
M17 1PG.

**T** 0161 872 6214

**F** 0161 872 7411

**E** [manchester@aitkencablemanagement.co.uk](mailto:manchester@aitkencablemanagement.co.uk)